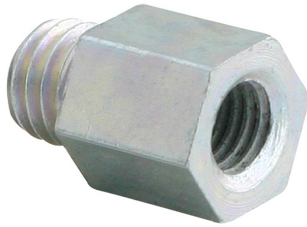


# Walraven Reduzierstücke (AG/IG) (ev)

(K 55 35)

zur Anpassung von Anschlussgewinden



6473XXX

6473521  
6484321

## Vorteile und Eigenschaften

- zum Verbinden von unterschiedlich großen Gewindeteilen (M8/M10)
- Material: Stahl
- elektrolytisch verzinkt

Art.Nr.	H (mm)	h (mm)	G1	G2	Lm1 (mm)	Lm2 (mm)	SW1 (mm)	VPE 1	VPE 2	Gew / 1 Einh (g)
6473008	19	12	M8	M6	7,0	5,5	13	100	1.000	10,00
6473206	20	12	M6	M8	7,0	6,0	13	100	1.000	15,00
6473210	23	15	M10	M8	9,0	6,0	13	100	1.000	15,00
6473212	23	15	M12	M8	8,0	6,0	17	50	500	25,00
6473221	30	22	G1/2	M8	13,0	8,0	27	50	250	79,00
6473306	21	13	M6	M10	7,0	6,0	13	100	1.000	20,00
6473308	21	13	M8	M10	7,0	6,0	13	100	1.000	15,00
6473312	25	15	M12	M10	8,0	8,0	17	50	500	30,00
6473316	32	22	M16	M10	13,0	8,0	24	25	250	70,00
6473321	31	21	G1/2	M10	12,0	8,0	27	25	250	73,00
6473408	23	13	M8	M12	7,0	7,5	13	50	1.000	18,00
6473410	23	13	M10	M12	8,0	7,5	13	50	1.000	15,00
6473416	32	22	M16	M12	11,0	8,0	24	50	250	75,00
6473510	32	18	M10	M16	9,0	11,0	19	50	250	55,00
6473512	32	18	M12	M16	10,0	11,0	19	50	250	50,00
6473521	15	-	M16	G1/2	15,0	-	-	100	1.000	14,00
6473621	25	15	G3/4	G1/2	12,0	7,0	-	25	250	70,00
6473721	32	20	G1	G1/2	17,0	9,0	-	10	100	100,00

