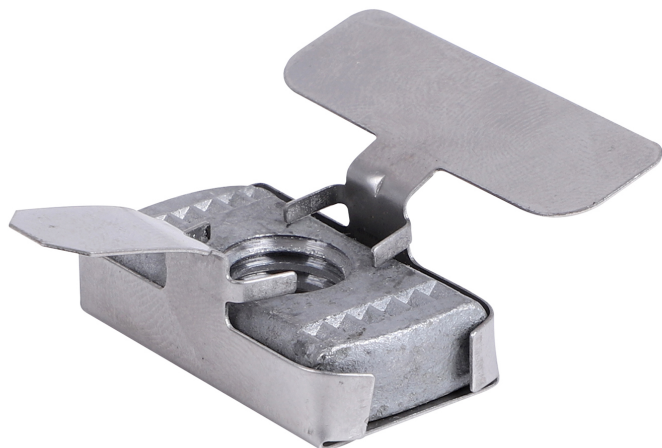


Walraven Maxx Wingnut

(H2 05 23)

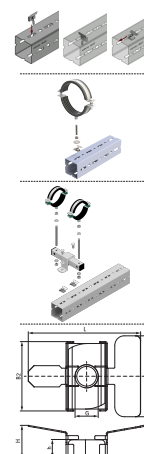
for connecting clamps and brackets to Maxx Heavy Rail Profiles



Funktioner og fordele

- patented slide nut for connecting clamps, sliders or RapidStrut® Rails to Maxx Profiles
- material: slide nut made from steel 1.0332; aid tray made from stainless steel 1.4301
- advised to be used with threaded rods M12, washers Ø 40mm and hexagon nuts M12
- slide nut: hot dip galvanized
- to be used with thread adaptors for connecting clamps M16 or 1/2"

Art.nr.	Type	G	L	B	B2	H	h	s	T _{inst}	F _{a,z}	F _{a,x}	Pakke 1
				(mm)	(mm)	(mm)	(mm)	(mm)	(Nm)	(N)	(N)	
651867112	WN	M12	58,3	42	36	17	9	0,5	50,0	11.400	2.100	40



Supplement

Walraven Maxx Profilskinne
Walraven Gevindrør (BUP1000)
Walraven Strut Spændeskive - Flad (BUP1000)

Supplement

BIS Møtrik (BUP1000)
BIS Glideenhed (BUP1000)
BIS Stålsætskruer (BUP1000)