

# BISOFIX® PIR40

for isolerede rør 12,0 - 406,4 mm

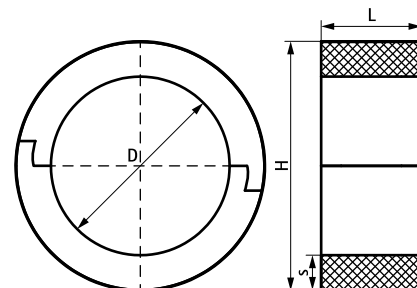
(D 03 70)



## Funktioner og fordele

- til kombination med hård isoleringsmateriale
- samles med selvklæbende aluminiumstape
- indeholder ikke CFC, HCFC, formaldehyd eller cadmium
- brandklasse B2
- PIR densitet for D < 110 mm = 80 kg/m<sup>3</sup>
- PIR densitet for D > 110 mm = 120 kg/m<sup>3</sup>
- termisk ledningsevne lambda (ca. værdi): 0,30 W/(mK)
- temperaturområde -45 °C - +105 °C

Art.nr.	VVS nr.	D (mm)	D (°)	DN	L	H (mm)	s (mm)	F <sub>a,z</sub> (N)	Pakke 1
I40000012		12,0	-	-	75 mm	92,0	40,0	300	25
I40000015		15,0 - 16,0	-	-	75 mm	95,0	40,0	320	25
I40000018		17,2 - 18,0	3/8	10	75 mm	98,0	40,0	340	25
I40000020		20,0	-	-	75 mm	100,0	40,0	340	25
I40000022		21,3 - 22,0	1/2	15	75 mm	102,0	40,0	350	25
I40000025		25,0	-	-	75 mm	105,0	40,0	350	25
I40000028		26,9 - 28,0	3/4	20	75 mm	108,0	40,0	350	25
I40000032		32,0	-	-	75 mm	112,0	40,0	370	25
I40000034		33,7 - 35,0	-	-	75 mm	115,0	40,0	370	25
I40000040		40,0	-	-	75 mm	120,0	40,0	400	25
I40000042	018059403	42,4	1 1/4	32	75 mm	122,4	40,0	410	25
I40000048	018059448	48,3	1 1/2	40	75 mm	128,3	40,0	430	25
I40000054	018059454	54,0	-	-	75 mm	134,0	40,0	440	25
I40000057	018059457	56,0 - 57,0	-	-	75 mm	137,0	40,0	460	25
I40000060	018059460	60,3	2	50	75 mm	140,3	40,0	470	25
I40000064	018059464	64,0	-	-	75 mm	144,0	40,0	490	25
I40000070	018059470	70,0	-	-	75 mm	150,0	40,0	510	15
I40000076	018059476	76,1	2 1/2	65	75 mm	156,1	40,0	530	15
I40000089	018059489	88,9	3	80	75 mm	168,9	40,0	620	15
I40000102	018059492	101,6	-	-	75 mm	181,6	40,0	650	15
I40000108	018059490	108,0	-	-	75 mm	188,0	40,0	690	15
I40000114	018059491	114,3	4	100	100 mm	194,3	40,0	1.530	5
I40000133		133,0	-	-	100 mm	213,0	40,0	1.670	5
I40000140		139,7	5	125	100 mm	219,7	40,0	1.730	5
I40000160		159,0 - 160,0	-	-	100 mm	240,0	40,0	2.850	8
I40000168		168,3	6	150	100 mm	248,3	40,0	2.960	8
I40000219		219,1	8	200	150 mm	299,1	40,0	4.510	2
I40000273		273,1	-	-	150 mm	353,0	40,0	5.320	2
I40000324		323,9	-	-	150 mm	404,0	40,0	6.090	2
I40000406		406,4	-	-	150 mm	486,4	40,0	6.150	2



### Supplement

Bifix® G2 (M8/10) (BUP1000)  
2S Rørbojle (M8/10)  
Walraven Industri Rørbojler HD500  
(BUP1000)

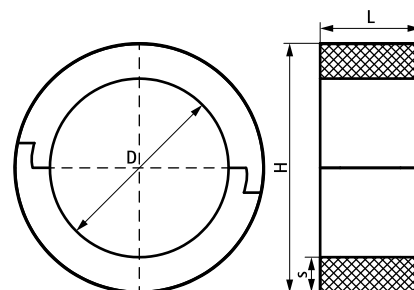
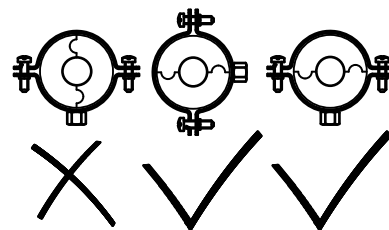
### Supplement

Walraven Industri Rørbojler HD500  
(BUP1000)

# BISOFIX<sup>®</sup> PIR40

for isolerede rør 12,0 - 406,4 mm

(D 03 70)



## Supplement

Bifix<sup>®</sup> G2 (M8/10) (BUP1000)  
2S Rørbøjle (M8/10)  
Walraven Industri Rørbøjler HD500  
(BUP1000)

## Supplement

Walraven Industri Rørbøjler HD500  
(BUP1000)