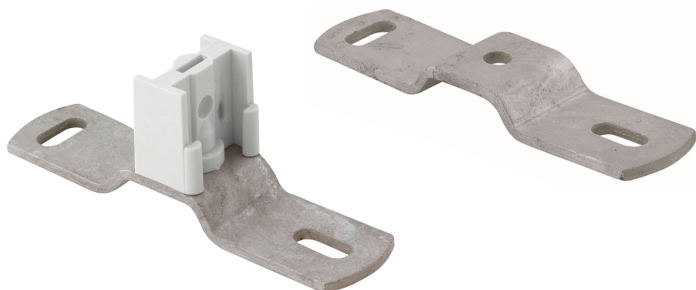


BIS Rustfrit Stål Ekspansions Beslag

(M 14 10)

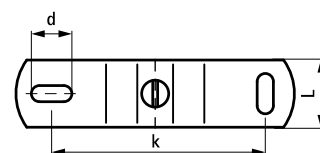
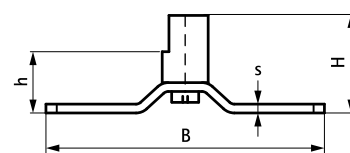
tilbehør BIS PVC rørbøjler



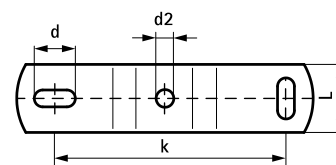
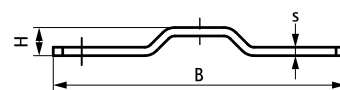
Funktioner og fordele

- for montering af regnvandsrør over ekspansionsfuger
- med "klør" som griber fat om rørbøjlen
- materiale: beslag lavet af rustfrit stål 1.4404 (AISI 316L); forbinder lavet af PC (polycarbonat), grå

| Art.nr. | Model | L | B | H | h | s | d1 | d2 | k | Farve | Pakke 1 |
|---------|---|-------|----------|---------|---------|--------|-------------|--------|---------|----------------|---------|
| 1487000 | Stainless steel with threaded connector | 25 mm | 104 (mm) | 36 (mm) | 25 (mm) | 3 (mm) | 15 x 6 (mm) | - (mm) | 80 (mm) | Grå (RAL 7035) | 50 |



1487000



1487010