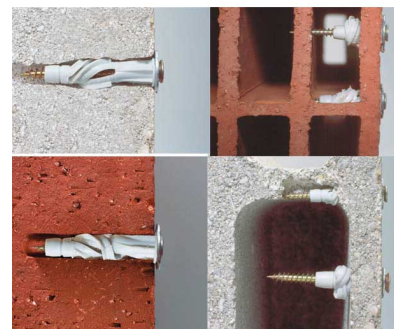
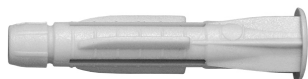


BIS ARAYPLAST

befæstelse i beton & mursten

(L 10 68)



Funktioner og fordele

- for let montering til eks. mursten (hule eller solide), stenmur (hul).
- med krave for at forhindre proppen i at falde ind i hulrum
- material: PE (polyethylene)

Art.nr.	L	HØ (mm)	Pakke1	Pakke2
6118331	50 mm	8	40	800
6118371	50 mm	8	600	6.000
6118411	60 mm	10	15	150

