

Checklist - How to choose the right anchor for your installation

Selecting the right anchor is critical to ensuring the safety and integrity of your installation. It can also give you peace of mind and make installation that little bit easier!

Here are nine key things to consider when selecting a concrete screw for your installation.

1) What is the base material into which you are fixing the anchor?

Whilst concrete is the most common base material, this is not always the case on every project. Be sure to check that the anchor you select is approved for use in the base material you have. This could be concrete (cracked or non-cracked), brick, hollow brick, silicate brick, stone and more.

2) What will the anchor be fixing?

The different head types on concrete screws offer advantages depending on what you will be fixing. For example, a hex head concrete screw is ideal for high load fixing through wall plates, a threaded rod hanger is perfect for hanging ceiling installations.



3) Required anchor load bearing capacity

Some concrete screws are designed to take higher loads than others. Be sure to check the ETA for load values of the anchor to check that they are suitable for what you will be supporting.

4) What are the environmental conditions around the installation?

If you are installing in particularly aggressive conditions such as corrosive environments, humid conditions, high temperature or fire rated areas then you may need to use anchors with specialist coatings or documented fire ratings.

5) Are you installing a safety-critical application?

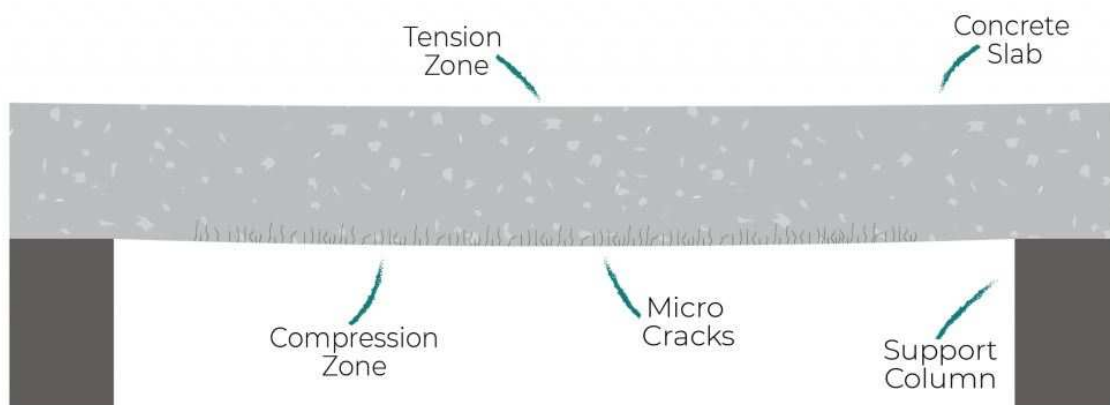
A safety-critical installation is defined by the CFA as “Applications in which the failure of an anchor could result in collapse or partial collapse of a structure, cause risk to human life, or lead to a significant economic loss”. If so, you must ensure that you use an ETA approved anchor and follow BS8539:2012 code of practice for sourcing and installing anchors.

6) What kind of forces will the anchor be subjected to?

Will the anchor be subject to static, quasi-static or dynamic forces. If the anchor will endure fatigue, seismic or shock forces then you need to select an anchor that has been tested and approved for use in such conditions.

7) Influencing parameters

Factors such as anchorage depth, edge distances, base material strength class, presence of reinforcement, or presence of cracks can also affect the suitability of different anchors.



8) Does the manufacturer provide adequate documentation and installation instructions?

To really have that peace of mind and assurance that the anchor you are using is of a suitable quality and has been tested and approved to perform in a scenario relevant to your installation, you should request ETA performance documentation from the manufacturer. This will give you all the information you need to know about the quality and performance of the anchor and how exactly to install it to ensure it is effective. If the manufacturer cannot provide an ETA certificate you should question the quality and reliability of the anchor you are selecting.

9) Do you need technical support and advice?

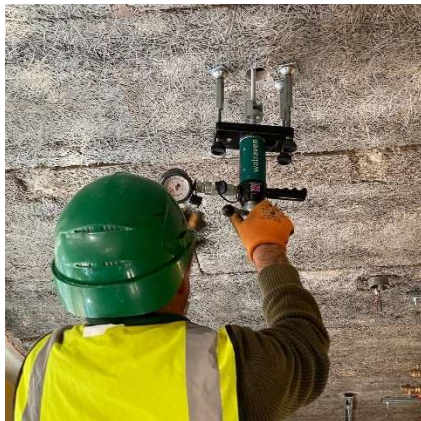
Some concrete screw and anchor manufacturers offer technical support alongside their product range. This can be useful if you have questions or need help selecting the right anchor for your needs. If you need onsite pull tests you should also check if your manufacturer provides these and whether there is a charge. Services can vary significantly from company to company.

What does Walraven offer?

Walraven's concrete anchor range includes concrete screws, throughbolts, drop-in anchors, highload anchors, chemical anchors and more. Alongside our product range we offer technical support and advice to help you at every step of the way if you need it.

In summary Walraven offers:

- A range of high load, high performance, mechanical and chemical anchors
- ETA approved range offering peace of mind and compliance with BS8539:2012
- Fire rated options
- Seismic options
- How to install videos and documented installation guidance
- Technical advice available over the phone any time
- Experts to carry out onsite pull tests for you, free of charge
- Free anchor design software download to help you carry out anchor calculations specific to your installation and select the right anchor for your needs



If you have any questions you can speak to one of our anchor experts below:

Rob Lee (covers northern half of the UK)

Mobile: 07500 936603

Email: rob.lee@walraven.com

John Goodyear (covers southern half of the UK)

Mobile: 07972 731496

Email: john.goodyear@walraven.com