

Walraven Závítové adaptéry (M/F)

(K 55 35)

prizpůsobení závitových spojů



6473XXX

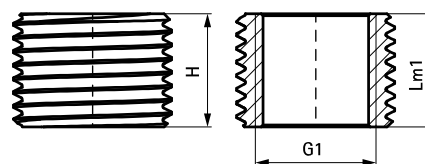
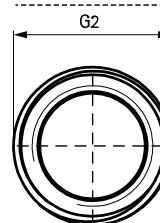
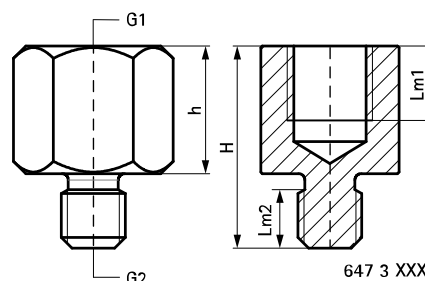
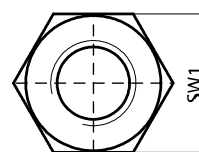
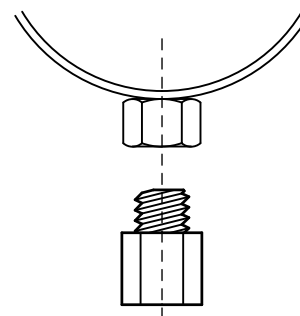


6473521
6484321

Vlastnosti a výhody

- doporučené zatížení pouze v tahu
- pro zvětšení či zmenšení závitu vůči závitu objímky, apod.
- materiál: ocel
- pozinkováno

| Výr. č. | H (mm) | h (mm) | G1 | G2 | Lm1 (mm) | Lm2 (mm) | SW1 (mm) | F _{a,z} (N) | M.Bal. | V.Bal. | Hmot./MJ (g) |
|---------|-----------|-----------|------|------|-------------|-------------|-------------|-------------------------|--------|--------|-----------------|
| 6473008 | 19 | 12 | M8 | M6 | 7,0 | 5,5 | 13 | 2 500 | 100 | 1 000 | 10,00 |
| 6473206 | 20 | 12 | M6 | M8 | 7,0 | 6,0 | 13 | 4 800 | 100 | 1 000 | 15,00 |
| 6473210 | 23 | 15 | M10 | M8 | 9,0 | 6,0 | 13 | 4 800 | 100 | 1 000 | 15,00 |
| 6473212 | 23 | 15 | M12 | M8 | 8,0 | 6,0 | 17 | 4 800 | 50 | 500 | 25,00 |
| 6473221 | 30 | 22 | G1/2 | M8 | 13,0 | 8,0 | 27 | 4 800 | 50 | 250 | 70,00 |
| 6473306 | 21 | 13 | M6 | M10 | 7,0 | 6,0 | 13 | 5 900 | 100 | 1 000 | 15,00 |
| 6473308 | 21 | 13 | M8 | M10 | 7,0 | 6,0 | 13 | 5 900 | 100 | 1 000 | 15,00 |
| 6473312 | 25 | 15 | M12 | M10 | 8,0 | 8,0 | 17 | 5 900 | 50 | 500 | 30,00 |
| 6473316 | 32 | 22 | M16 | M10 | 13,0 | 8,0 | 24 | 5 900 | 25 | 250 | 70,00 |
| 6473321 | 31 | 21 | G1/2 | M10 | 12,0 | 8,0 | 27 | 5 900 | 25 | 250 | 73,00 |
| 6473408 | 23 | 13 | M8 | M12 | 7,0 | 7,5 | 13 | 8 800 | 50 | 1 000 | 18,00 |
| 6473410 | 23 | 13 | M10 | M12 | 8,0 | 7,5 | 13 | 8 800 | 50 | 1 000 | 15,00 |
| 6473416 | 32 | 22 | M16 | M12 | 11,0 | 8,0 | 24 | 8 800 | 50 | 250 | 75,00 |
| 6473510 | 32 | 18 | M10 | M16 | 9,0 | 11,0 | 19 | 10 800 | 50 | 250 | 55,00 |
| 6473512 | 32 | 18 | M12 | M16 | 10,0 | 11,0 | 19 | 19 900 | 50 | 250 | 50,00 |
| 6473421 | 26 | 11 | M10 | G1/2 | 9,0 | 13,0 | 27 | 10 800 | 25 | 125 | 80,00 |
| 6473521 | 15 | - | M16 | G1/2 | 15,0 | - | - | 19 900 | 100 | 1 000 | 14,00 |
| 6473621 | 25 | 15 | G3/4 | G1/2 | 12,0 | 7,0 | - | 12 700 | 25 | 250 | 70,00 |
| 6473721 | 32 | 20 | G1 | G1/2 | 17,0 | 9,0 | - | 5 500 | 10 | 100 | 100,00 |



647 3 521 /
648 4 321