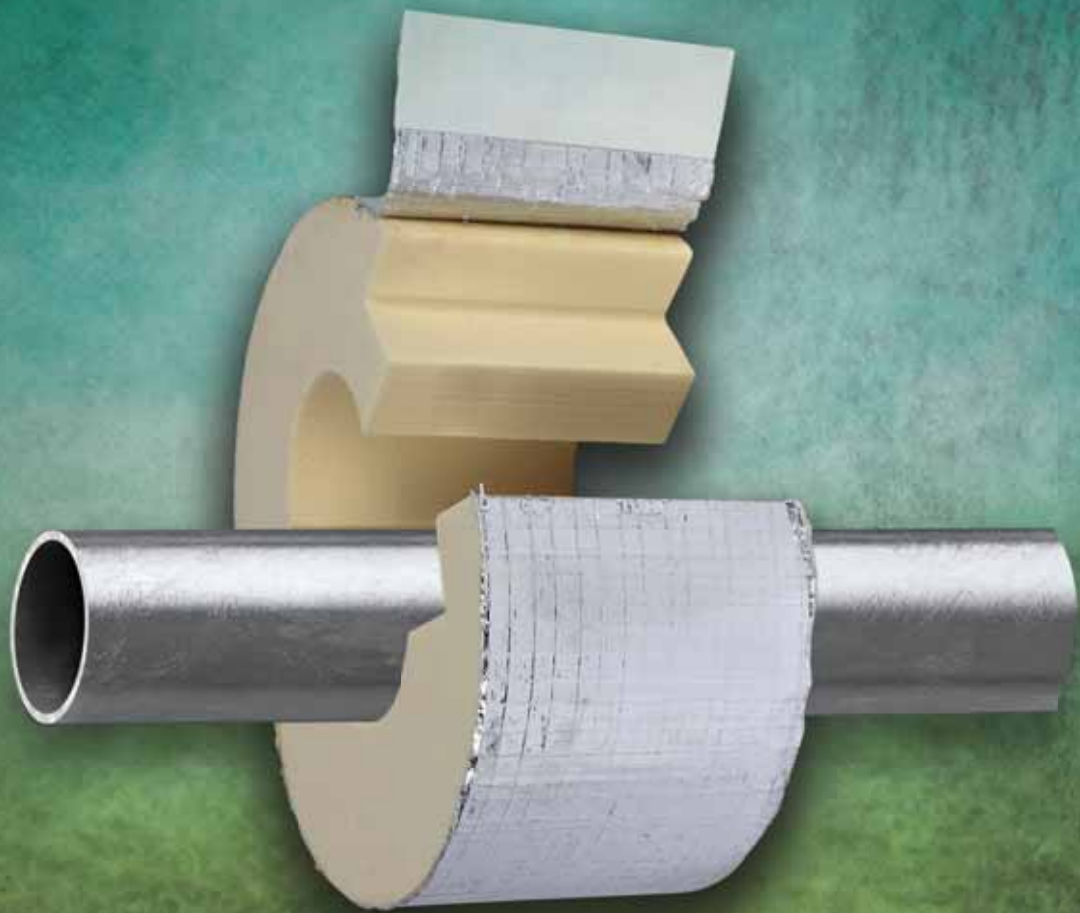


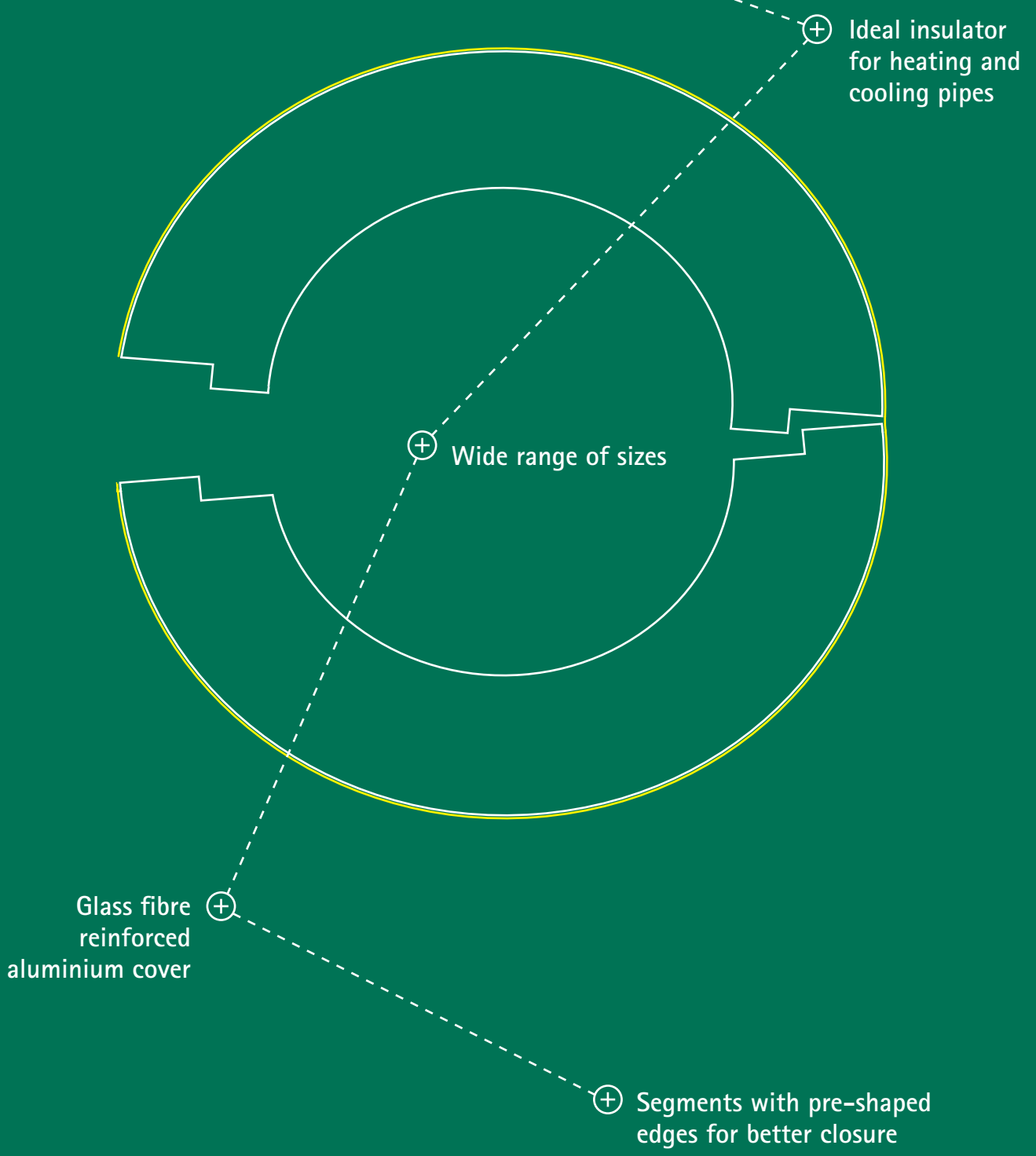
Hot or cold,
we've got you covered!



BISOFIX[®] PIR

For pipes that are fitted with PIR rigid foam insulation

BISOFIX® PIR 



⊕ Ideal insulator for heating and cooling pipes

⊕ Wide range of sizes

⊕ Glass fibre reinforced aluminium cover

⊕ Segments with pre-shaped edges for better closure

Inspired by smart solutions from the start

Walraven is a globally active company in the installation industry, founded in 1942. We have always been dedicated to make the work of our customers easier and more effective. With simple and smart solutions, comprehensive services and excellent support. Walraven. The value of smart

BISOFIX® PIR20

For insulated pipes 12.0 – 273.1mm



Product information

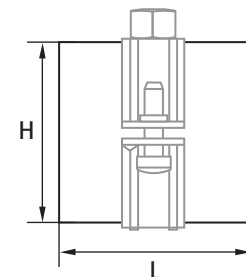
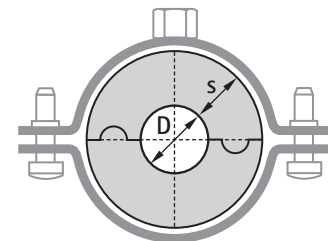
The insulated pipe support consists of two identical segments, made of PIR rigid foam. These two parts are covered with glass fibre reinforced aluminium tape. They have a self-adhesive closing. The self-adhesive strip at the tip of the foil forms a quick and solid vapour proof barrier. During installation the joints between the insulating pipe supports and the pipe sections have to be sealed using aluminium tape.

Product details

Part No.	D (mm)	L	H (mm)	s (mm)	F _{a,z} (N)	Pack 1
I200000012	12.0	75 mm	52.0	20.0	120	25
I200000015	15.0 - 16.0	75 mm	55.0	20.0	160	25
I200000018	17.2 - 18.0	75 mm	58.0	20.0	170	25
I200000020	20.0	75 mm	60.0	20.0	180	25
I200000022	21.3 - 22.0	75 mm	62.0	20.0	180	25
I200000025	25.0	75 mm	65.0	20.0	190	25
I200000028	26.9 - 28.0	75 mm	68.0	20.0	200	25
I200000032	32.0	75 mm	72.0	20.0	210	25
I200000034	33.7 - 35.0	75 mm	75.0	20.0	220	25
I200000040	40.0	75 mm	80.0	20.0	260	25
I200000042	42.4	75 mm	82.4	20.0	280	25
I200000048	48.3	75 mm	88.3	20.0	300	25
I200000050	50.0	75 mm	90.0	20.0	310	25
I200000054	54.0	75 mm	94.0	20.0	320	25
I200000057	56.0 - 57.0	75 mm	97.0	20.0	330	25
I200000060	60.3	75 mm	100.3	20.0	340	25
I200000064	64.0	75 mm	104.0	20.0	350	25
I200000070	70.0	75 mm	110.0	20.0	370	25
I200000076	76.1	75 mm	116.1	20.0	390	25
I200000089	88.9	75 mm	128.9	20.0	430	25
I200000102	101.6	75 mm	141.6	20.0	450	25
I200000108	108.0	75 mm	148.0	20.0	500	25
I200000114	114.3	100 mm	154.3	20.0	1,110	15
I200000133	133.0	100 mm	173.0	20.0	1,360	5
I200000140	139.7	100 mm	179.7	20.0	1,410	5
I200000160	159.0 - 160.0	100 mm	200.0	20.0	1,520	5
I200000168	168.3	100 mm	208.3	20.0	1,570	5
I200000219	219.1	100 mm	259.1	20.0	1,620	8
I200000273	273.1	100 mm	313.0	20.0	1,670	2

Features

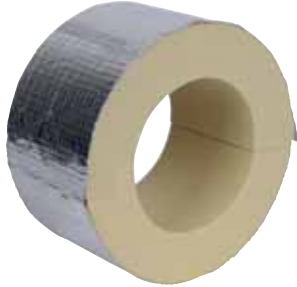
- Insulation shell with glass fibre reinforced aluminium foil with self-adhesive closing
- For fast fixing of rigid foam insulated pipes
- Vapour proof fitting prevents thermal bridge
- Material: PIR thermally hardening foam
- Density: 80 kg/m³ and 120 kg/m³
- Block length: 75mm up to 100mm
- λ (W/mK) - 0.021 – 0.040
- Working temperature from -45°C up to +140°C
- Water vapour resistance $\mu > 7,000$
- Fire rating: class B2



The final thermal insulation value of the insulated pipe support combined with the load bearing capacity make PIR insulating pipe supports a quick and efficient solution.

BISOFIX® PIR30

For insulated pipes 12.0 – 323.9mm



Product information

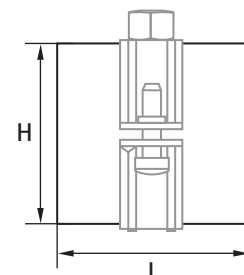
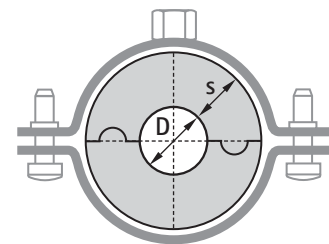
The BISOFIX® PIR30 consist of two 30mm thick identical segments, that are made of PIR rigid foam. These two parts are covered with glass fibre reinforced aluminium tape. They have a self-adhesive closing. The self-adhesive strip at the tip of the foil forms a quick and solid vapour proof barrier. During installation the joints between the insulating pipe supports and the pipe sections have to be sealed using aluminium tape.

Product details

Part No.	D (mm)	L	H (mm)	s (mm)	F _{a,z} (N)	Pack 1
I300000012	12.0	75 mm	72.0	30.0	130	25
I300000015	15.0 - 16.0	75 mm	75.0	30.0	170	25
I300000018	17.2 - 18.0	75 mm	78.0	30.0	190	25
I300000020	20.0	75 mm	80.0	30.0	200	25
I300000022	21.3 - 22.0	75 mm	82.0	30.0	230	25
I300000025	25.0	75 mm	85.0	30.0	260	25
I300000028	26.9 - 28.0	75 mm	88.0	30.0	300	25
I300000032	32.0	75 mm	92.0	30.0	310	25
I300000034	33.7 - 35.0	75 mm	95.0	30.0	320	25
I300000040	40.0	75 mm	100.0	30.0	340	25
I300000042	42.4	75 mm	102.4	30.0	350	25
I300000048	48.3	75 mm	108.3	30.0	370	25
I300000050	50.0	75 mm	110.0	30.0	370	25
I300000054	54.0	75 mm	114.0	30.0	380	25
I300000057	56.0 - 57.0	75 mm	117.0	30.0	390	25
I300000060	60.3	75 mm	120.3	30.0	410	25
I300000064	64.0	75 mm	124.0	30.0	420	25
I300000070	70.0	75 mm	130.0	30.0	440	25
I300000076	76.1	75 mm	136.1	30.0	460	25
I300000089	88.9	75 mm	148.9	30.0	500	15
I300000102	101.6	100 mm	161.6	30.0	550	15
I300000108	108.0	100 mm	168.0	30.0	620	15
I300000114	114.3	100 mm	174.3	30.0	1,370	15
I300000133	133.0	100 mm	193.0	30.0	1,520	5
I300000140	139.7	100 mm	199.7	30.0	1,570	5
I300000160	159.0 - 160.0	100 mm	220.0	30.0	1,720	5
I300000168	168.3	100 mm	228.3	30.0	2,720	8
I300000219	219.1	150 mm	279.1	30.0	4,210	2
I300000273	273.1	150 mm	333.0	30.0	5,020	2
I300000324	323.9	150 mm	384.0	30.0	5,790	2

Features

- Insulation shell with glass fibre reinforced aluminium foil with self-adhesive closing
- For fast fixing of rigid foam insulated pipes
- Vapour proof fitting prevents thermal bridge
- Material: PIR thermally hardening foam
- Density: 80 kg/m³ and 120 kg/m³
- Block length: 75mm up to 150mm
- λ (W/mK) - 0.021 – 0.040
- Working temperature from -45°C up to +140°C
- Water vapour resistance $\mu > 7,000$
- Fire rating: class B2



Quick and efficient

BISOFIX® PIR40

For insulated pipes 12.0 – 406.4mm



Product information

The BISOFIX® PIR40 consist of two 40mm thick identical segments, that are made of PIR rigid foam. These two parts are covered with glass fibre reinforced aluminium tape. They have a self-adhesive closing. The self-adhesive strip at the tip of the foil forms a quick and solid vapour proof barrier. During installation the joints between the insulating pipe supports and the pipe sections have to be sealed using aluminium tape.

Product details

Part No.	D (mm)	L	H (mm)	s (mm)	F _{a,z} (N)	Pack 1
I400000012	12.0	75 mm	92.0	40.0	300	25
I400000015	15.0 - 16.0	75 mm	95.0	40.0	320	25
I400000018	17.2 - 18.0	75 mm	98.0	40.0	340	25
I400000020	20.0	75 mm	100.0	40.0	340	25
I400000022	21.3 - 22.0	75 mm	102.0	40.0	350	25
I400000025	25.0	75 mm	105.0	40.0	350	25
I400000028	26.9 - 28.0	75 mm	108.0	40.0	350	25
I400000032	32.0	75 mm	112.0	40.0	370	25
I400000034	33.7 - 35.0	75 mm	115.0	40.0	370	25
I400000040	40.0	75 mm	120.0	40.0	400	25
I400000042	42.4	75 mm	122.4	40.0	410	25
I400000048	48.3	75 mm	128.3	40.0	430	25
I400000054	54.0	75 mm	134.0	40.0	440	25
I400000057	56.0 - 57.0	75 mm	137.0	40.0	460	25
I400000060	60.3	75 mm	140.3	40.0	470	25
I400000064	64.0	75 mm	144.0	40.0	490	25
I400000070	70.0	75 mm	150.0	40.0	510	15
I400000076	76.1	75 mm	156.1	40.0	530	15
I400000089	88.9	75 mm	168.9	40.0	620	15
I400000102	101.6	100 mm	181.6	40.0	650	15
I400000108	108.0	100 mm	188.0	40.0	690	15
I400000114	114.3	100 mm	194.3	40.0	1,530	5
I400000133	133.0	100 mm	213.0	40.0	1,670	5
I400000140	139.7	100 mm	219.7	40.0	1,730	5
I400000160	159.0 - 160.0	100 mm	240.0	40.0	2,850	8
I400000168	168.3	100 mm	248.3	40.0	2,960	8
I400000219	219.1	150 mm	299.1	40.0	4,510	2
I400000273	273.1	150 mm	353.0	40.0	5,320	2
I400000324	323.9	150 mm	404.0	40.0	6,090	2
I400000406	406.4	150 mm	486.4	40.0	6,150	2



*"Useful product,
easy to install"*

Robert Veerhuis

BISOFIX® PIR50

For insulated pipes 12.0 – 406.4mm



Product information

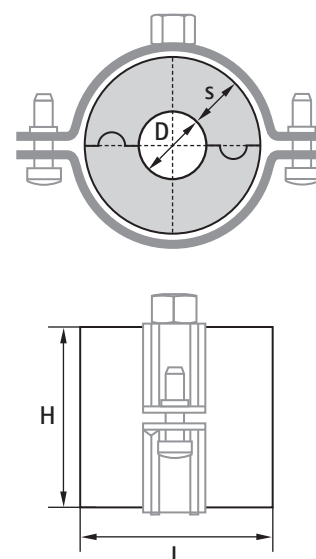
For heavy applications and materials with high insulation value, the BISOFIX® PIR50 are recommended. Two identical PIR rigid foam segments are covered with glass fibre reinforced aluminium tape. They have a self-adhesive closing. The self-adhesive strip at the tip of the foil forms a quick and solid vapour proof barrier. During installation the joints between the insulating pipe supports and the pipe sections have to be sealed using aluminium tape.

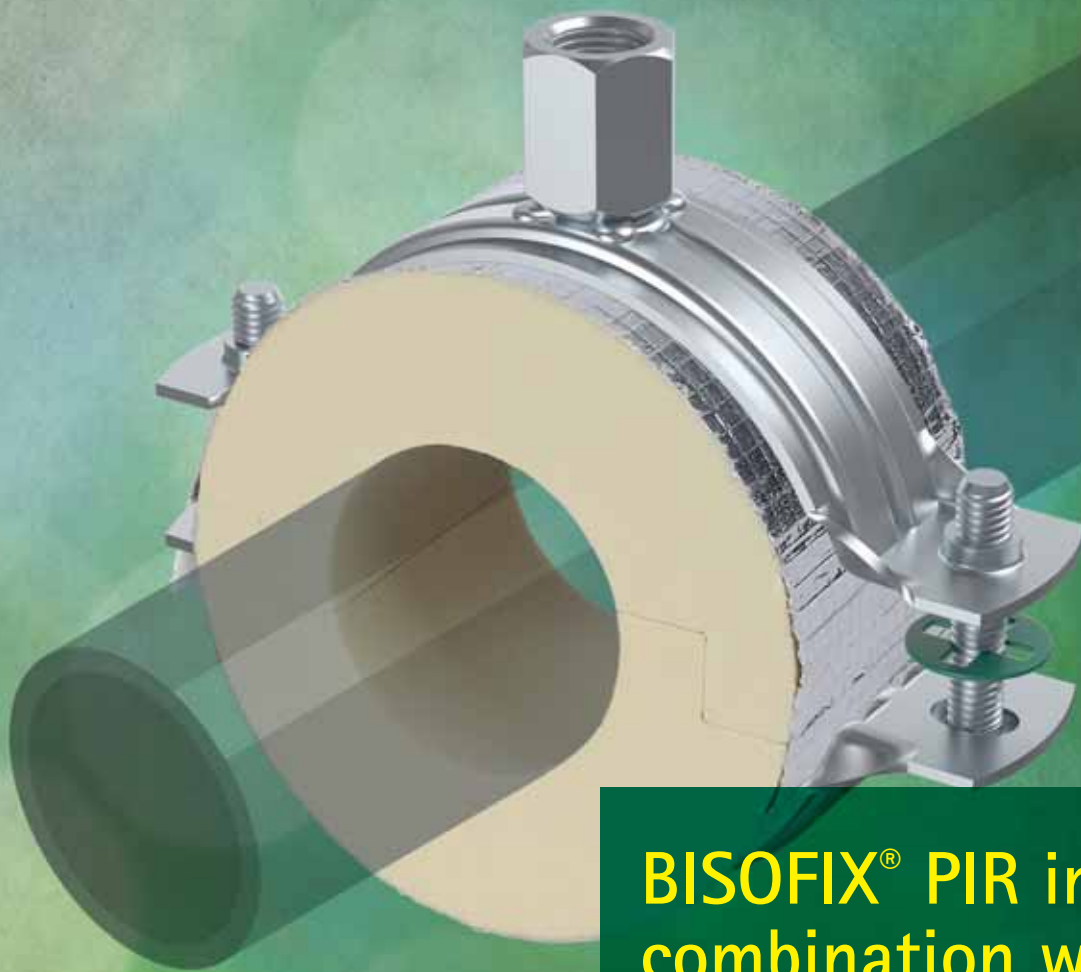
Product details

Part No.	D (mm)	L	H (mm)	s (mm)	F _{a,z} (N)	Pack 1
I500000012	12.0	75 mm	112.0	50	220	25
I500000015	15.0 - 16.0	75 mm	115.0	50	250	25
I500000018	17.2 - 18.0	75 mm	118.0	50	300	25
I500000020	20.0	75 mm	120.0	50	340	25
I500000022	21.3 - 22.0	75 mm	122.0	50	340	25
I500000025	25.0	75 mm	125.0	50	350	25
I500000028	26.9 - 28.0	75 mm	128.0	50	350	25
I500000032	32.0	75 mm	132.0	50	370	25
I500000034	33.7 - 35.0	75 mm	135.0	50	370	25
I500000040	40.0	75 mm	140.0	50	440	25
I500000042	42.4	75 mm	142.4	50	470	25
I500000048	48.3	75 mm	148.3	50	500	15
I500000050	50.0	75 mm	150.0	50	510	15
I500000054	54.0	75 mm	154.0	50	520	15
I500000057	56.0 - 57.0	75 mm	157.0	50	520	15
I500000060	60.3	75 mm	160.3	50	540	15
I500000064	64.0	75 mm	164.0	50	550	15
I500000070	70.0	75 mm	170.0	50	600	15
I500000076	76.1	75 mm	176.1	50	650	15
I500000089	88.9	75 mm	188.9	50	690	15
I500000102	101.6	100 mm	201.6	50	720	5
I500000108	108.0	100 mm	208.0	50	760	5
I500000114	114.3	100 mm	214.3	50	1,680	5
I500000133	133.0	100 mm	233.0	50	2,780	8
I500000140	139.7	100 mm	239.7	50	2,860	8
I500000160	159.0 - 160.0	100 mm	260.0	50	3,090	8
I500000168	168.3	100 mm	268.3	50	3,200	8
I500000219	219.1	150 mm	319.1	50	4,810	2
I500000273	273.1	150 mm	373.1	50	5,620	2
I500000324	323.9	150 mm	424.0	50	6,390	2
I500000406	406.4	150 mm	506.4	50	6,410	2

Features

- Insulation shell with glass fibre reinforced aluminium foil with self-adhesive closing
- For fast fixing of rigid foam insulated pipes
- Vapour proof fitting prevents thermal bridge
- Material: PIR thermally hardening foam
- Density: 80 kg/m³ and 120 kg/m³
- Block length: 75mm up to 150mm
- λ (W/mK) - 0.021 – 0.040
- Working temperature from -45°C up to +140°C
- Water vapour resistance μ > 7,000
- Fire rating: class B2





BISOFIX® PIR in combination with different clamps

The right product combination of insulating pipe supports and fixing material provides the highest installation quality. For heavy outdoor applications, the insulating pipe supports are combined with HD 500 clamps. For both indoor and outdoor applications, the Walraven Bifix® G2 clamps deliver the perfect solution. If the installation is situated indoors and the specific environment does not demand higher specifications, then the Walraven 2S clamps will be an ideal solution. Always a smart solution to help you fix your insulated pipe.

walraven.com/int/insulating-pipe-supports

BISOFIX® PIR60

For insulated pipes 12.0 – 168.3 mm



Product information

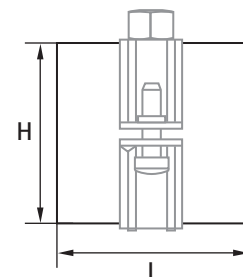
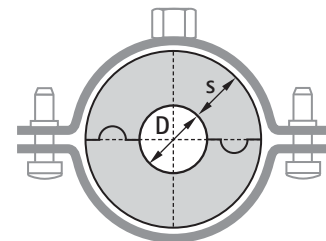
For applications requiring very high insulation value, the BISOFIX PIR60 is recommended. The PIR rigid foam segments are covered with glass fibre-reinforced aluminium tape. They have a self-adhesive closing. The self-adhesive strip at the foil's tip forms a quick and solid vapour-proof barrier. During installation, the joints between the insulating pipe supports and the pipe sections must be sealed using aluminium tape.

Product details

Part No.	D (mm)	D (")	DN	L	H (mm)	s (mm)	F _{a,z} (N)	Pack 1
I600000012	12.0	-	-	75 mm	132.0	60.0	250	25
I600000016	15.0 - 16.0	-	-	75 mm	136.0	60.0	270	25
I600000018	17.2 - 18.0	3/8	10	75 mm	138.0	60.0	310	25
I600000020	20.0	-	-	75 mm	140.0	60.0	320	25
I600000022	21.3 - 22.0	1/2	15	75 mm	142.0	60.0	350	25
I600000025	25.0	-	-	75 mm	145.0	60.0	370	25
I600000028	26.9 - 28.0	3/4	20	75 mm	148.0	60.0	380	15
I600000032	32.0	-	-	75 mm	152.0	60.0	390	15
I600000035	33.7 - 35.0	1	25	75 mm	155.0	60.0	400	15
I600000040	40.0	-	-	75 mm	160.0	60.0	420	15
I600000042	42.4	1 1/4	32	75 mm	162.0	60.0	500	15
I600000048	48.3	1 1/2	40	75 mm	168.0	60.0	530	15
I600000050	50.0	-	-	75 mm	170.0	60.0	540	15
I600000054	54.0	-	-	75 mm	174.0	60.0	580	15
I600000057	56.0 - 57.0	-	-	75 mm	177.0	60.0	600	15
I600000060	60.3	2	50	75 mm	180.0	60.0	620	15
I600000064	64.0	-	-	75 mm	184.0	60.0	640	15
I600000070	70.0	-	-	75 mm	190.0	60.0	680	15
I600000076	76.1	2 1/2	65	75 mm	196.0	60.0	720	15
I600000089	88.9	3	80	75 mm	209.0	60.0	730	15
I600000102	101.6	-	-	75 mm	222.0	60.0	760	15
I600000108	108.0	-	-	75 mm	228.0	60.0	800	15
I600000114	114.3	4	100	75 mm	234.0	60.0	1,790	5
I600000133	133.0	-	-	100 mm	253.0	60.0	2,190	8
I600000140	139.7	5	125	100 mm	260.0	60.0	2,280	8
I600000159	159.0	-	-	100 mm	279.0	60.0	2,450	8
I600000168	168.3	6	150	100 mm	288.0	60.0	2,620	8

Features

- Insulation shell with glass fibre reinforced aluminium foil with self-adhesive closing
- For fast fixing of rigid foam insulated pipes
- Vapour proof fitting prevents thermal bridge
- Material: PIR thermally hardening foam
- Density: 80 kg/m³ and 120 kg/m³
- Block length: 75mm up to 100mm
- (W/mK) - 0.021 – 0.040
- Working temperature from -45°C up to +140°C
- Water vapour resistance $\mu > 7,000$
- Fire rating: class B2



BISOFIX® PIR80

For insulated pipes 88.9 – 120.0 mm



Product information

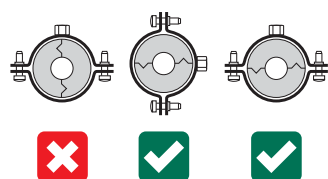
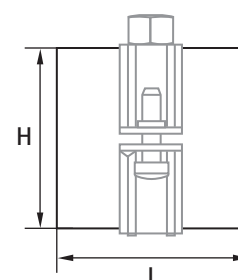
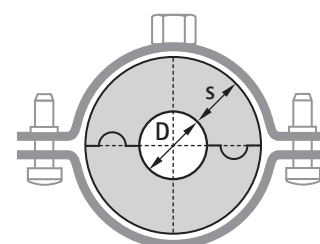
For applications requiring the highest insulation value, the BISOFIX PIR80 is recommended. The PIR rigid foam segments are covered with glass fibre-reinforced aluminium tape. They have a self-adhesive closing. The self-adhesive strip at the foil's tip forms a quick and solid vapour-proof barrier. During installation, the joints between the insulating pipe supports and the pipe sections must be sealed using aluminium tape.

Product details

Part No.	D (mm)	D (")	DN	L	H (mm)	s (mm)	F _{a,z} (N)	Pack 1
1800000089	88.9	3	80	75 mm	249.0	80.0	800	5
1800000100	100.0	-	-	75 mm	260.0	80.0	820	5
1800000114	114.3	4	100	75 mm	274.0	80.0	1,860	5
1800000120	120.0	-	-	75 mm	280.0	80.0	2,150	5

Features

- Insulation shell with glass fibre reinforced aluminium foil with self-adhesive closing
- For fast fixing of rigid foam insulated pipes
- Vapour proof fitting prevents thermal bridge
- Material: PIR thermally hardening foam
- Density: 80 kg/m³ and 120 kg/m³
- Block length: 75mm
- (W/mK) - 0.021 – 0.040
- Working temperature from -45°C up to +140°C
- Water vapour resistance $\mu > 7,000$
- Fire rating: class B2



The right installation method delivers the best performance

Always make sure that you position the insulating pipe supports in the correct position.

BISOFIX® PIR Selection Chart

This chart is designed to help you select the right clamp and insulation block combination.

BISOFIX® PIR



- Recommended temperature -180° C to +140° C

2S Clamp



- 2 screw clamp
- Screws secured with anti-loss washer
- Zinc plated finish
- For dry, indoor environment (C1)

Bifix® G2 Clamp



- 2 screw clamp
- Quick closing mechanism
- BIS UltraProtect® 1000 (BUP) coating
- For wet, corrosive environment (C1-C4)

BIS HD 500 Clamp



- Heavy duty clamp
- CO₂ welded connection nut
- BIS UltraProtect® 1000 (BUP) coating
- For wet, corrosive environment (C1-C4)

Pipe diameter (mm)	Product Type	BISOFIX® PIR20	BISOFIX® PIR30	BISOFIX® PIR40	BISOFIX® PIR50	BISOFIX® PIR60	BISOFIX® PIR80
12.0	BISOFIX® PIR	I200000012	I300000012	I400000012	I500000012	I600000012	-
	2S Clamp	33035052	33035081	33035095	33035112	33035137	-
	Bifix® G2 Clamp	3008052	3008070	3008091	3008115	-	-
	BIS HD 500 Clamp	33038052	33048078	33048092	33048116	-	-
15.0	BISOFIX® PIR	I200000015	I300000015	I400000015	I500000015	-	-
	2S Clamp	33035061	33035081	33035095	33035118	-	-
	Bifix® G2 Clamp	3008058	3008079	3008105	3008115	-	-
	BIS HD 500 Clamp	33038058	33048078	33048092	33048116	-	-
15.0 - 16.0	BISOFIX® PIR	-	-	-	-	I600000016	-
	2S Clamp	-	-	-	-	33035137	-
	Bifix® G2 Clamp	-	-	-	-	-	-
	BIS HD 500 Clamp	-	-	-	-	-	-
17.2 - 18.0	BISOFIX® PIR	I200000018	I300000018	I400000018	I500000018	I600000018	-
	2S Clamp	33035061	33035081	33035103	33035118	33035144	-
	Bifix® G2 Clamp	3008058	3008079	3008105	3008115	-	-
	BIS HD 500 Clamp	33038058	33048078	33048106	33048123	-	-
20.0	BISOFIX® PIR	I200000020	I300000020	I400000020	I500000020	I600000020	-
	2S Clamp	33035061	33035081	33035103	33035127	33035144	-
	Bifix® G2 Clamp	-	-	-	-	-	-
	BIS HD 500 Clamp	-	-	-	-	-	-
21.3 - 22.0	BISOFIX® PIR	I200000022	I300000022	I400000022	I500000022	I600000022	-
	2S Clamp	33035061	33035087	33035103	33035127	33035144	-
	Bifix® G2 Clamp	3008064	3008083	3008105	3008130	-	-
	BIS HD 500 Clamp	33038065	33048085	33048106	33048123	-	-
25.0	BISOFIX® PIR	I200000025	I300000025	I400000025	I500000025	I600000025	-
	2S Clamp	33035067	33035087	33035112	33035127	33035153	-
	Bifix® G2 Clamp	-	-	-	-	-	-
	BIS HD 500 Clamp	-	-	-	-	-	-
26.9 - 28.0	BISOFIX® PIR	I200000028	I300000028	I400000028	I500000028	I600000028	-
	2S Clamp	33035067	33035095	33035112	33035137	33035153	-
	Bifix® G2 Clamp	3008070	3008091	3008115	3008130	-	-
	BIS HD 500 Clamp	33038071	33048092	33048116	33048133	-	-
32.0	BISOFIX® PIR	I200000032	I300000032	I400000032	I500000032	I600000032	-
	2S Clamp	33035074	33035095	33035112	33035137	33035153	-
	Bifix® G2 Clamp	-	-	-	-	-	-
	BIS HD 500 Clamp	-	-	-	-	-	-



Pipe diameter (mm)	Product Type	BISOFIX® PIR20	BISOFIX® PIR30	BISOFIX® PIR40	BISOFIX® PIR50	BISOFIX® PIR60	BISOFIX® PIR80
33.7 – 35.0	BISOFIX® PIR	I200000034	I300000034	I400000034	I500000034	I600000035	-
	2S Clamp	33035074	33035095	33035118	33035137	33035162	-
	Bifix® G2 Clamp	3008079	3008091	3008115	3008140	-	-
	BIS HD 500 Clamp	33048078	33048092	33048116	33048140	-	-
40.0	BISOFIX® PIR	I200000040	I300000040	I400000040	I500000040	I600000040	-
	2S Clamp	33035081	33035103	33035127	33035144	33035162	-
	Bifix® G2 Clamp	-	-	-	-	-	-
	BIS HD 500 Clamp	-	-	-	-	-	-
42.4	BISOFIX® PIR	I200000042	I300000042	I400000042	I500000042	I600000042	-
	2S Clamp	33035087	33035103	33035127	33035144	33035162	-
	Bifix® G2 Clamp	3008083	3008105	3008130	3008140	-	-
	BIS HD 500 Clamp	33048085	33048106	33048123	33048140	-	-
48.3	BISOFIX® PIR	I200000048	I300000048	I400000048	I500000048	I600000048	-
	2S Clamp	33035095	33035112	33035137	33035153	33035172	-
	Bifix® G2 Clamp	3008091	3008115	3008130	3008140	-	-
	BIS HD 500 Clamp	33048092	33048116	33048133	33048154	-	-
50.0	BISOFIX® PIR	I200000050	I300000050	-	I500000050	I600000050	-
	2S Clamp	33035095	33035112	-	33035153	33035172	-
	Bifix® G2 Clamp	-	-	-	-	-	-
	BIS HD 500 Clamp	-	-	-	-	-	-
54.0	BISOFIX® PIR	I200000054	I300000054	I400000054	I500000054	I600000054	-
	2S Clamp	33035095	33035118	33035137	33035162	33035183	-
	Bifix® G2 Clamp	3008091	3008115	3008140	3008160	-	-
	BIS HD 500 Clamp	33048092	33048116	33048133	33048154	-	-
56.0 – 57.0	BISOFIX® PIR	I200000057	I300000057	I400000057	I500000057	I600000057	-
	2S Clamp	33035103	33035118	33035137	33035162	33035183	-
	Bifix® G2 Clamp	3008105	3008115	3008140	3008160	-	-
	BIS HD 500 Clamp	33048106	33048116	33048140	33048154	-	-
60.0	BISOFIX® PIR	I200000060	I300000060	I400000060	I500000060	-	-
	2S Clamp	33035103	33035127	33035144	33035162	-	-
	Bifix® G2 Clamp	3008105	3008130	3008140	3008160	-	-
	BIS HD 500 Clamp	33048106	33048123	33048140	33048169	-	-
60.3	BISOFIX® PIR	-	-	-	-	I600000060	-
	2S Clamp	-	-	-	-	33035183	-
	Bifix® G2 Clamp	-	-	-	-	-	-
	BIS HD 500 Clamp	-	-	-	-	-	-

BISOFIX® PIR Selection Chart

This chart is designed to help you select the right clamp and insulation block combination.

Pipe diameter (mm)	Product Type	BISOFIX® PIR20	BISOFIX® PIR30	BISOFIX® PIR40	BISOFIX® PIR50	BISOFIX® PIR60	BISOFIX® PIR80
64.0	BISOFIX® PIR	I200000064	I300000064	I400000064	I500000064	I600000064	-
	2S Clamp	33035112	33035127	33035144	33035172	33035194	-
	Bifix® G2 Clamp	3008105	3008130	3008140	3008169	-	-
	BIS HD 500 Clamp	33048106	33048123	33048140	33048169	-	-
70.0	BISOFIX® PIR	I200000070	I300000070	I400000070	I500000070	I600000070	-
	2S Clamp	33035112	33035137	33035153	33035172	33035194	-
	Bifix® G2 Clamp	3008115	3008130	3008160	3008169	-	-
	BIS HD 500 Clamp	33048116	33048133	33048154	33048169	-	-
76.0	BISOFIX® PIR	I200000076	I300000076	I400000076	I500000076	-	-
	2S Clamp	33035118	33035137	33035162	33035183	-	-
	Bifix® G2 Clamp	3008115	3008140	3008160	3008180	-	-
	BIS HD 500 Clamp	33048116	33048140	33048154	33048183	-	-
76.1	BISOFIX® PIR	-	-	-	-	I600000076	-
	2S Clamp	-	-	-	-	33035205	-
	Bifix® G2 Clamp	-	-	-	-	-	-
	BIS HD 500 Clamp	-	-	-	-	-	-
88.9	BISOFIX® PIR	-	-	-	-	I600000089	I800000089
	2S Clamp	-	-	-	-	33035216	-
	Bifix® G2 Clamp	-	-	-	-	-	-
	BIS HD 500 Clamp	-	-	-	-	-	33068254
89.0	BISOFIX® PIR	I200000089	I300000089	I400000089	I500000089	-	-
	2S Clamp	33035137	33035153	33035172	33035194	-	-
	Bifix® G2 Clamp	3008130	3008160	3008180	3008200	-	-
	BIS HD 500 Clamp	33048133	33048154	33048169	33048183	-	-
100.0	BISOFIX® PIR	-	-	-	-	-	I800000100
	2S Clamp	-	-	-	-	-	-
	Bifix® G2 Clamp	-	-	-	-	-	-
	BIS HD 500 Clamp	-	-	-	-	-	33068264
101.6	BISOFIX® PIR	-	-	-	-	I600000102	-
	2S Clamp	-	-	-	-	33035225	-
	Bifix® G2 Clamp	-	-	-	-	-	-
	BIS HD 500 Clamp	-	-	-	-	-	-
102.0	BISOFIX® PIR	I200000102	I300000102	I400000102	I500000102	-	-
	2S Clamp	33035144	33035162	33035183	33035205	-	-
	Bifix® G2 Clamp	3008140	3008160	3008180	3008200	-	-
	BIS HD 500 Clamp	33048140	33048169	33048183	33048202	-	-
108.0	BISOFIX® PIR	I200000108	I300000108	I400000108	I500000108	I600000108	-
	2S Clamp	33035153	33035172	33035194	33035216	-	-
	Bifix® G2 Clamp	3008160	3008169	3008200	3008210	-	-
	BIS HD 500 Clamp	33048154	33048169	33048183	33048219	33068227	-
114.0	BISOFIX® PIR	I200000114	I300000114	I400000114	I500000114	-	-
	2S Clamp	33035162	33035183	33035194	33035216	-	-
	Bifix® G2 Clamp	3008160	3008180	3008200	3008210	-	-
	BIS HD 500 Clamp	33048154	33048183	33048202	33048219	-	-
114.3	BISOFIX® PIR	-	-	-	-	I600000114	I800000114
	2S Clamp	-	-	-	-	-	-
	Bifix® G2 Clamp	-	-	-	-	-	-
	BIS HD 500 Clamp	-	-	-	-	33068241	33068279

BISOFIX® PIR



2S Rørbøjle



Bifix® G2 Rørbøjle



BIS HD 500 Rørbøjle



Pipe diameter (mm)	Product Type	BISOFIX® PIR20	BISOFIX® PIR30	BISOFIX® PIR40	BISOFIX® PIR50	BISOFIX® PIR60	BISOFIX® PIR80
120.0	BISOFIX® PIR	-	-	-	-	-	I800000120
	2S Clamp	-	-	-	-	-	-
	Bifix® G2 Clamp	-	-	-	-	-	-
	BIS HD 500 Clamp	-	-	-	-	-	33068289
133.0	BISOFIX® PIR	I200000133	I300000133	I400000133	I500000133	I600000133	-
	2S Clamp	33035183	33035194	33035216	-	-	-
	Bifix® G2 Clamp	3008180	3008200	3008210	-	-	-
	BIS HD 500 Clamp	33048183	33048202	33048219	33068241	33068254	-
139.7	BISOFIX® PIR	-	-	-	-	I600000140	-
	2S Clamp	-	-	-	-	-	-
	Bifix® G2 Clamp	-	-	-	-	-	-
	BIS HD 500 Clamp	-	-	-	-	33068264	-
140.0	BISOFIX® PIR	I200000140	I300000140	I400000140	I500000140	-	-
	2S Clamp	33035183	33035205	33035225	-	-	-
	Bifix® G2 Clamp	3008180	3008200	3008225	-	-	-
	BIS HD 500 Clamp	33048183	33048202	33048219	33068241	-	-
159.0	BISOFIX® PIR	-	-	-	-	I600000159	-
	2S Clamp	-	-	-	-	-	-
	Bifix® G2 Clamp	-	-	-	-	-	-
	BIS HD 500 Clamp	-	-	-	-	33068279	-
159.0 - 160.0	BISOFIX® PIR	I200000160	I300000160	I400000160	I500000160	-	-
	2S Clamp	33035205	33035225	-	-	-	-
	Bifix® G2 Clamp	3008200	3008225	-	-	-	-
	BIS HD 500 Clamp	33048202	33048219	33068241	33068264	-	-
168.3	BISOFIX® PIR	I200000168	I300000168	I400000168	I500000168	I600000168	-
	2S Clamp	33035216	-	-	-	-	-
	Bifix® G2 Clamp	3008210	-	-	-	-	-
	BIS HD 500 Clamp	33048219	33048227	33068254	33068279	33068289	-
219.0	BISOFIX® PIR	I200000219	I300000219	I400000219	I500000219	-	-
	2S Clamp	-	-	-	-	-	-
	Bifix® G2 Clamp	-	-	-	-	-	-
	BIS HD 500 Clamp	33068264	33068289	33068302	33068325	-	-
273.1	BISOFIX® PIR	I200000273	I300000273	I400000273	I500000273	-	-
	2S Clamp	-	-	-	-	-	-
	Bifix® G2 Clamp	-	-	-	-	-	-
	BIS HD 500 Clamp	33068325	33068325	33068360	33068374	-	-
323.9	BISOFIX® PIR	-	I300000324	I400000324	I500000324	-	-
	2S Clamp	-	-	-	-	-	-
	Bifix® G2 Clamp	-	-	-	-	-	-
	BIS HD 500 Clamp	-	33068389	33068408	33068436	-	-
406.4	BISOFIX® PIR	-	-	-	I500000406	-	-
	2S Clamp	-	-	-	-	-	-
	Bifix® G2 Clamp	-	-	-	-	-	-
	BIS HD 500 Clamp	-	-	-	33068509	-	-



Hot or cold, we've got you covered!

Every installation is different. Fortunately, Walraven understands the specific challenges that come with developing complex technical solutions and working at height.

In addition to a comprehensive range of robust, durable and easy-to-install product systems, our experts and engineers are always available to share their years of expertise and advise you on the safest, most durable and cost-effective solutions for your installation.

To find out how we can support you, visit walraven.com/int/insulating-pipe-supports

The value of smart

BISOFIX® PIR

Features and benefits

Different sizes

- Available in thickness ranges from 20mm up to 50mm to suit different performance specifications
- Special sizes may be available on request

Moisture resistance

- Factory-applied foil covering acts as highly effective vapour barrier
- Stepped joints ensure vapour seal and accurate location
- Closed cell structure resists moisture absorption and mould



A smart solution for fixing insulated pipes

BISOFIX® PIR in combination with different clamps for indoor and outdoor applications

At Walraven, offering smart solutions starts with smart product designs and applications. The right product combination of insulating pipe supports and fixing material provides the highest installation quality you want to experience and present to your customers. Whether completing a job indoors or outdoors, the Walraven fixing materials that are offered in combination with the insulating pipe supports deliver the expected results.

For heavy outdoor applications, the insulating pipe supports are combined with HD 500 clamps. For both indoor and outdoor applications, the Walraven Bifix® G2 clamps deliver the perfect solution. If the installation is situated indoors and the specific environment does not demand higher specifications, then the Walraven 2S clamps will be an ideal solution.



■ BISOFIX® PIR with 2S Clamp



■ BISOFIX® PIR with Bifix® G2 Clamp



■ BISOFIX® PIR with HD 500 Clamp

Find out how we can support you

Would you like to find out more about any of the solutions described in this brochure?

Or would you like to discuss how we could help you find the best possible solution for your project? Get in touch today!

Other countries

Walraven International

Industrieweg 5
3641 RK Mijdrecht (NL)
Tel. +31 297 23 30 00
Fax +31 297 23 30 99
export@walraven.com

Walraven Group

Mijdrecht (NL) · Tienen (BE) · Bayreuth (DE) · Banbury (GB) · Malmö (SE) · Grenoble (FR) · Barcelona (ES) · Kraków (PL)
Mladá Boleslav (CZ) · Moscow (RU) · Kyiv (UA) · Danville (US) · Shanghai (CN) · Dubai (AE) · Budapest (HU) · Mumbai (IN)
Singapore (SG) · Burlington (CA)

