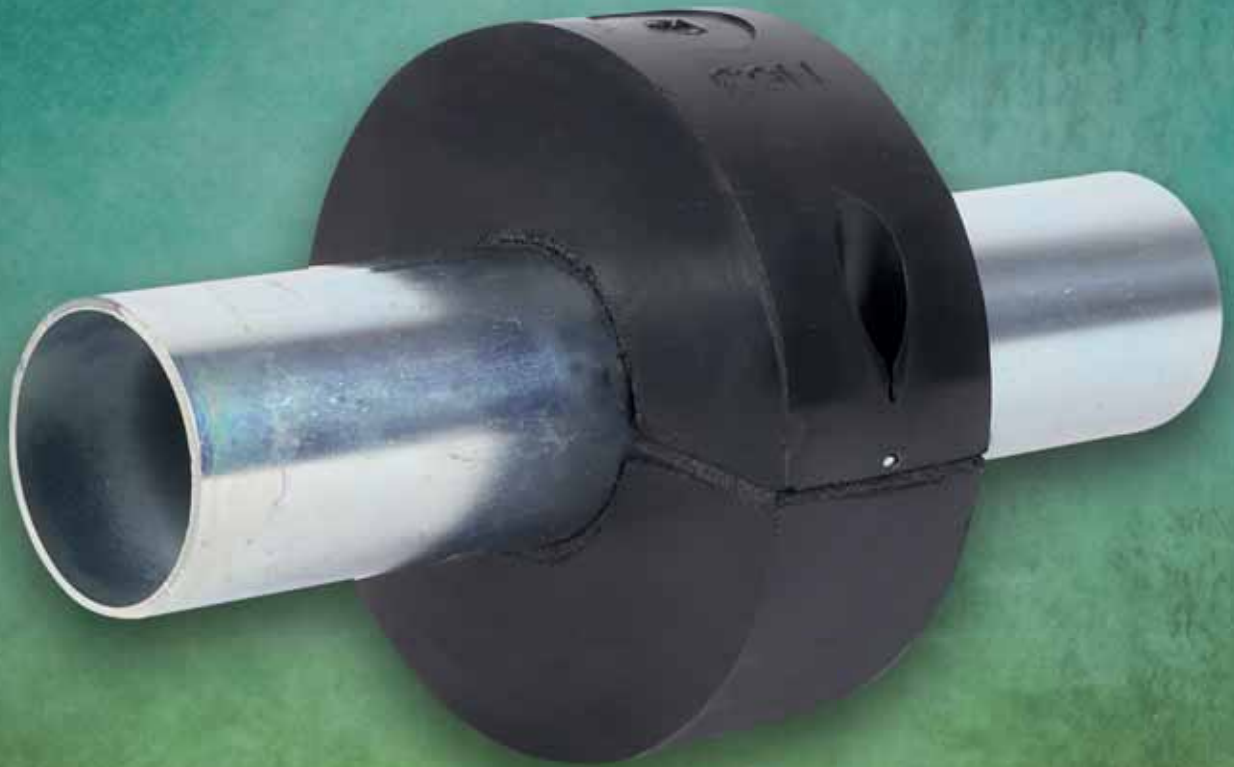



Hot or cold,
we've got you covered!

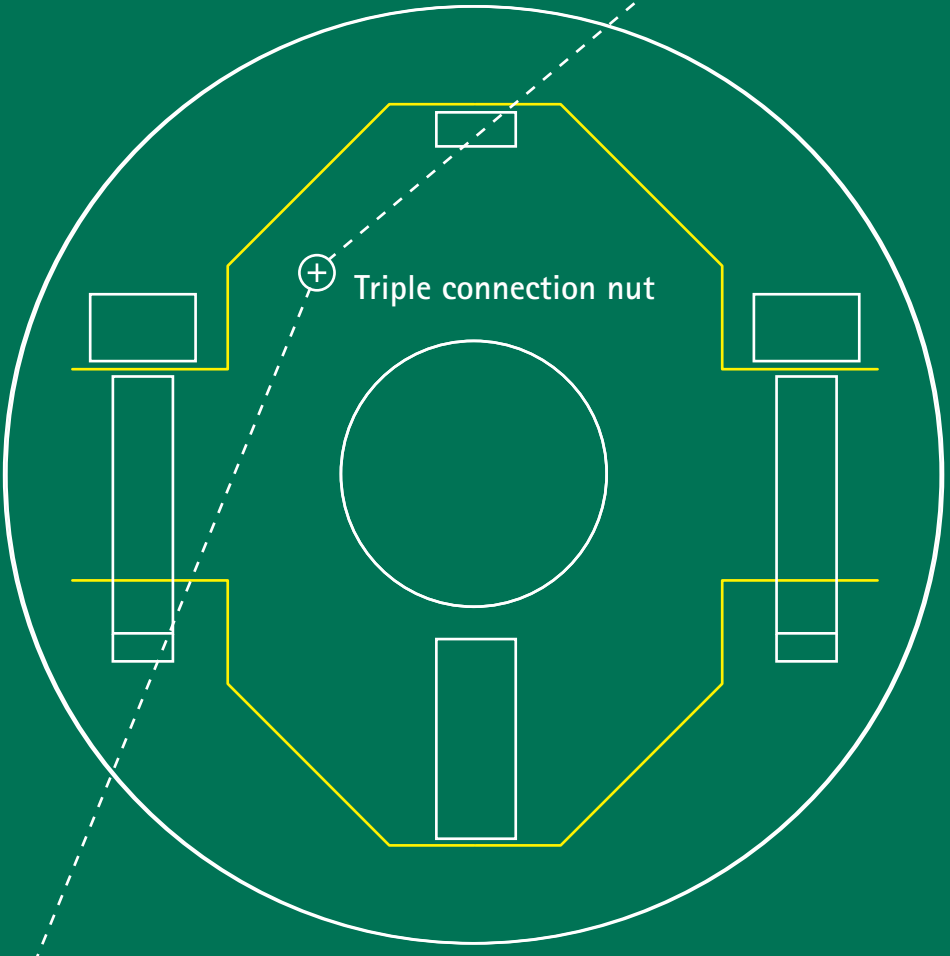


BISOFIX[®] 88


For fixing of thermal insulated utility pipework

BISOFIX® 88 

 Rubber lined inner surface



 Triple connection nut

Quick and easy  to install

 Installation without sealant

Inspired by smart solutions from the start

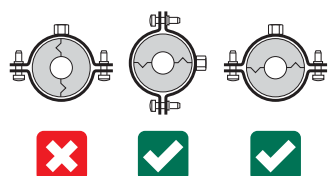
Walraven is a globally active company in the installation industry, founded in 1942. We have always been dedicated to make the work of our customers easier and more effective. With simple and smart solutions, comprehensive services and excellent support. Walraven. The value of smart

BISOFIX® 88

In combination with air-conditioning and low temperature installations

Product information

BISOFIX® 88 insulating pipe supports are made out of steel clamps with casted polyurethane insulation bodies. The inside of the clamp parts is covered with rubber foam for noise insulation. This way, the BISOFIX® 88 are effective in both thermal and noise insulation. The connection nut of the BISOFIX® 88 is equipped with 3 different thread sizes to match M8, M10 and 1/2" threaded rod on pipes up to 139mm. For bigger dimensions the thread connections develop up to M24 for DN400 pipe. The clamps can be used in installations with both soft elastomer based insulation and rigid foam insulation. Insulating pipe supports only require tightening of 2 inner hex bolts for quick and easy installation up to 219mm. Above DN250, 2 external M16 bolts are used to secure the pipe. That is a smart solution.



The right installation method delivers the best performance

Always make sure that you position the insulating pipe supports in the correct position.



Features and benefits

- Two-screw clamp integrated in closed cell rigid PUR foam
- For fixing of thermal insulated air-conditioning and utility pipes of steel, copper or stainless steel
- No sealant necessary between the 2 parts due to the rubber inlay
- Vapour proof gluing to pipe insulation is mandatory
- Good resistance to chemicals influences
- Working temperature from -50°C up to +105°C
- Polyurethane density 250 kg/m³
- Fire rating: class B2

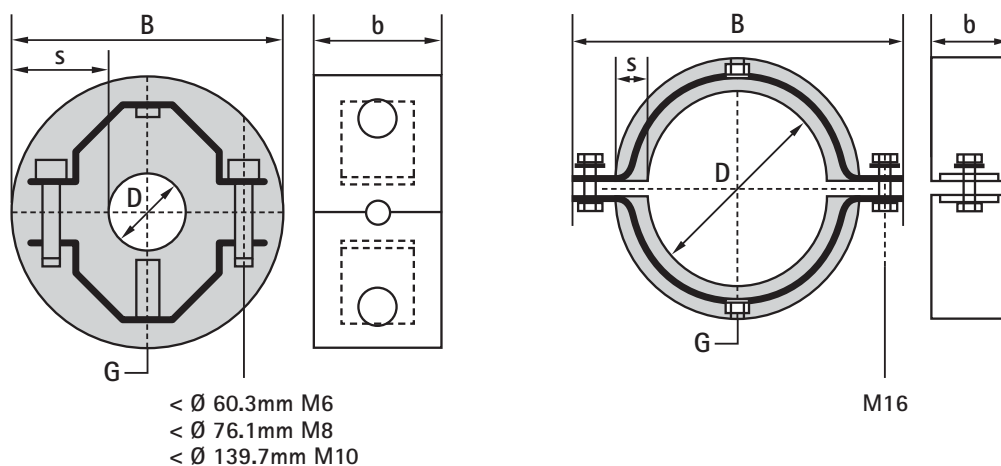



*"Useful product,
easy to install"*

Robert Veerhuis

Product details

Part No.	D (mm)	D (")	DN	G	B (mm)	b x s (mm)	Fa,z (N)	Pack 1
0880015	15.8	-	-	M8/M10/1/2"	75	40 x 30	180	10
0880017	17.2	3/8	10	M8/M10/1/2"	77	40 x 30	180	10
0880018	18.0	-	-	M8/M10/1/2"	78	40 x 30	180	10
0880021	21.3	1/2	15	M8/M10/1/2"	81	40 x 30	220	10
0880022	22.0	-	-	M8/M10/1/2"	82	40 x 30	220	10
0880027	26.9	3/4	20	M8/M10/1/2"	87	40 x 30	280	10
0880028	28.0	-	-	M8/M10/1/2"	88	40 x 30	280	10
0880033	33.7	1	25	M8/M10/1/2"	93	40 x 30	350	10
0880035	35.0	-	-	M8/M10/1/2"	95	40 x 30	350	10
0880042	42.4	1 1/4	32	M8/M10/1/2"	102	40 x 30	440	10
0880048	48.3	1 1/2	40	M8/M10/1/2"	108	40 x 30	500	10
0880054	54.0	-	-	M8/M10/1/2"	114	40 x 30	590	10
0880057	57.0	-	-	M8/M10/1/2"	117	40 x 30	590	10
0880060	60.3	2	50	M8/M10/1/2"	120	50 x 30	620	10
0880076	76.1	2 1/2	65	M8/M10/1/2"	136	50 x 30	1,180	10
0880089	88.9	3	80	M8/M10/1/2"	149	50 x 30	1,390	10
0880108	108.0	-	-	M8/M10/1/2"	188	60 x 40	2,240	10
0880114	114.3	4	100	M8/M10/1/2"	195	60 x 40	2,370	3
0880133	133.0	-	-	M8/M10/1/2"	213	60 x 40	2,760	5
0880139	139.7	5	125	M8/M10/1/2"	220	60 x 40	2,880	5
0880159	159.0	-	-	M12/1/2"	240	60 x 40	3,310	5
0880168	168.3	6	150	M12/1/2"	250	60 x 40	3,490	5
0880219	219.1	8	200	M16	340	100 x 60	4,550	5
0880273	273.2	10	250	M16	393	100 x 60	11,470	2
0880324	324.3	12	300	M20	448	100 x 60	13,600	2
0880355	355.6	14	350	M20	477	100 x 60	14,940	1
0880368	368.0	-	350	M20	492	120 x 60	18,550	1
0880406	406.4	16	400	M24	530	120 x 60	20,480	1





Hot or cold,
we've got you covered

Every installation is different. Fortunately, Walraven understands the specific challenges that come with developing complex technical solutions and working at height.

In addition to a comprehensive range of robust, durable and easy-to-install product systems, our experts and engineers are always available to share their years of expertise and advise you on the safest, most durable and cost-effective solutions for your installation.

To find out how we can support you, visit walraven.com/int/insulating-pipe-supports

Find out how we can support you

Would you like to find out more about any of the solutions described in this brochure?
Or would you like to discuss how we could help you find the best possible solution for your project? Get in touch today!

Other countries

Walraven International

P.O. Box 15
3640 AA Mijdrecht (NL)
Tel. +31 (0)297 23 30 00
Fax +31 (0)297 23 30 99
export@walraven.com

Walraven Group

Mijdrecht (NL) · Tienen (BE) · Bayreuth (DE) · Banbury (GB) · Malmö (SE) · Grenoble (FR) · Barcelona (ES) · Kraków (PL)
Mladá Boleslav (CZ) · Moscow (RU) · Kyiv (UA) · Detroit (US) · Shanghai (CN) · Dubai (AE) · Budapest (HU) · Mumbai (IN)
Singapore (SG)

