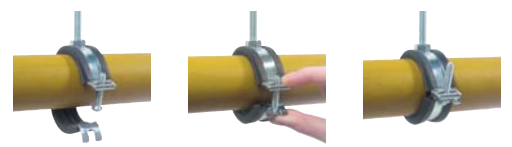


Fixed in a flash
without tools



BISMAT[®] Flash

Single screw pipe clamp



BISMAT® Flash



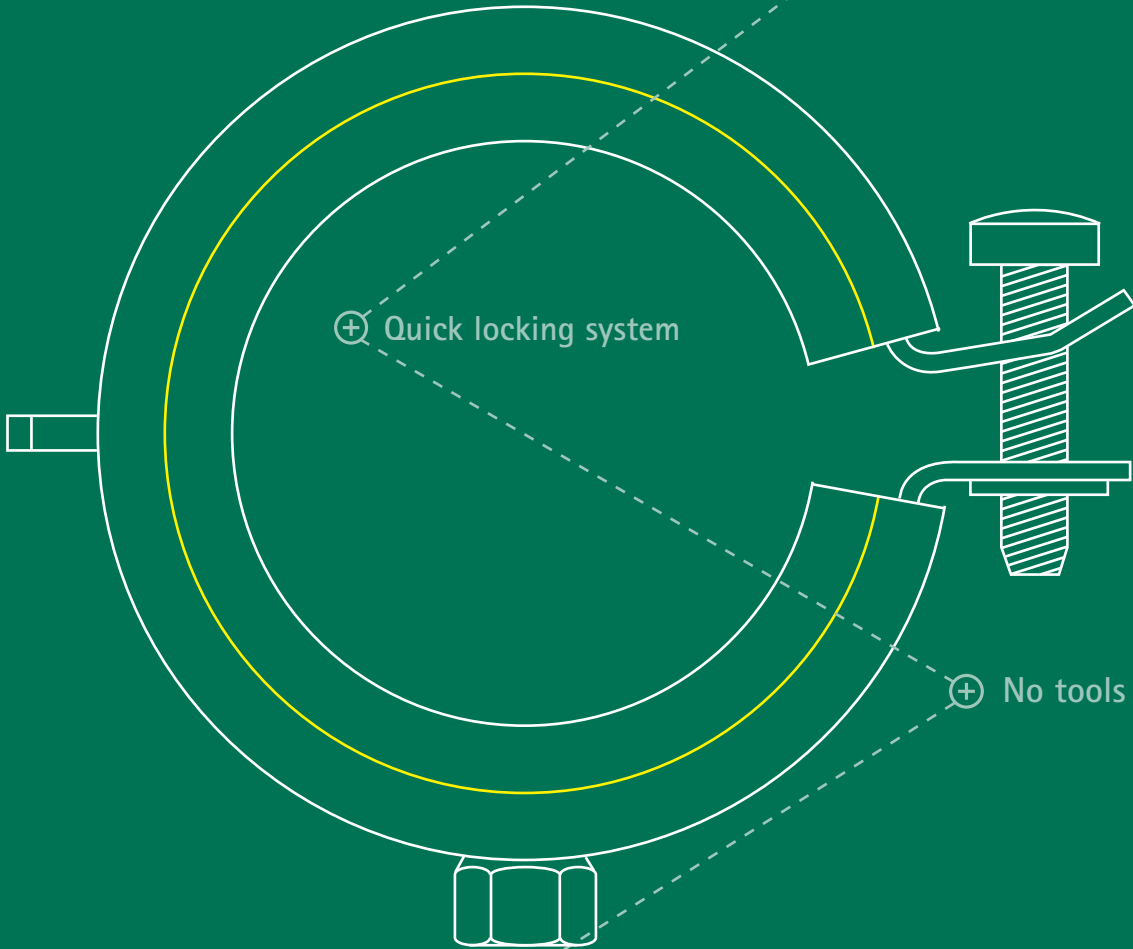
⊕ Optimised noise insulation

⊕ Quick locking system

⊕ No tools required

Fast installation ⊕

⊕ Complete range of sizes



BISMAT® Flash



The BISMAT® Flash is a single screw pipe clamp with quick locking system. The locking screw can be secured by one simple thumb push. Tools are not required. As the locking screw is manually closed, there is minimal rubber compression: this results in better absorption of noise and vibration. The BISMAT® Flash is suitable for fixing all types of metal pipes \varnothing 15 mm up to and including 63 mm ($\frac{3}{8}$ " up to and including 2"). The steel locking guarantees safety and reliability in all conditions. The fire resistance properties of BISMAT® Flash are tested by the Materials Testing Institute (MPA) in Braunschweig (Germany) according to RAL-GZ 656.

Easy to close with one hand!



1. Insert pipe



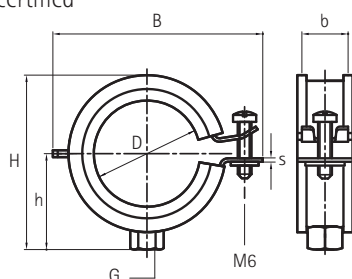
2. Close clamp / push screw



3. Done!

Features and benefits

- Single screw pipe clamp
- Advanced quick locking system
- Easy to close with one simple thumb push
- Material: steel, zinc plated
- EPDM lining provides noise insulation according to DIN 4109
- Manual closing feature allows optimal noise insulation
- Tested for fire safety
- RAL-certified



Part No.	G	D			B	H	h	b x s	RAL*	Fa,z**	Box
		(mm)	(")	(DN)							
337 3 018	M8	15 - 18	$\frac{3}{8}$	10	49	36	22	20 x 1,00	RAL ²	500	50
337 3 023	M8	20 - 23	$\frac{1}{2}$	15	54	39	23	20 x 1,00	RAL ²	500	50
337 3 028	M8	25 - 28	$\frac{3}{4}$	20	59	44	26	20 x 1,00	RAL ²	500	50
337 3 035	M8	32 - 35	1	25	65	51	30	20 x 1,00	RAL ²	500	50
337 3 043	M8	40 - 43	$1\frac{1}{4}$	32	74	60	34	20 x 1,25	RAL ²	700	50
337 3 051	M8	48 - 51	$1\frac{1}{2}$	40	82	66	37	20 x 1,25	RAL ²	700	50
337 3 056	M8	53 - 56	-	-	85	76	42	20 x 1,25	RAL ²	700	50
337 3 063	M8	57 - 63	2	50	91	82	45	20 x 1,25	RAL ²	700	50
337 4 018	M8/10	15 - 18	$\frac{3}{8}$	10	49	44	30	20 x 1,00	RAL ²	500	50
337 4 023	M8/10	20 - 23	$\frac{1}{2}$	15	54	47	31	20 x 1,00	RAL ²	500	50
337 4 028	M8/10	25 - 28	$\frac{3}{4}$	20	59	52	34	20 x 1,00	RAL ²	500	50
337 4 035	M8/10	32 - 35	1	25	65	59	38	20 x 1,00	RAL ²	500	50
337 4 043	M8/10	40 - 43	$1\frac{1}{4}$	32	74	68	42	20 x 1,25	RAL ²	700	50
337 4 051	M8/10	48 - 51	$1\frac{1}{2}$	40	82	74	45	20 x 1,25	RAL ²	700	50
337 4 056	M8/10	53 - 56	-	-	85	84	50	20 x 1,25	RAL ²	700	50
337 4 063	M8/10	57 - 63	2	50	91	90	53	20 x 1,25	RAL ²	700	50

* RAL² : tested, certified and monitored by a third party according to RAL-GZ 655/B and RAL-GZ 656.

** The max. allowed load (Fa,z) is determined according to RAL-GZ 655/B, using statistical methods related to the breaking load and considering a max. allowed deflection of 1,5 mm or 2% of the maximum clamp diameter.

RAL

The maximum allowed load is established and published by means of a standardised measuring method. Thanks to the RAL 'Gütegemeinschaft Rohrbefestigung' the quality of pipe clamps and fixing rail produced by the members, becomes clear and simply comparable. The 'RAL-Gütezeichen' is exclusively awarded to products that meet high standards and is a proof of quality.



Find out how we can support you

Would you like to find out more about any of the solutions described in this brochure?
Or would you like to discuss how we could help you find the best possible solution for your project? Get in touch today!

United Kingdom Ireland

Walraven Ltd.

Thorpe Way, Banbury (GB)
Oxon, OX16 4UU
Tel. +44 (0)1295 75 34 00
Fax +44 (0)1295 75 34 28
sales.uk@walraven.com

Other countries

Walraven International

P.O. Box 15
3640 AA Mijdrecht (NL)
Tel. +31 (0)297 23 30 00
Fax +31 (0)297 23 30 99
export@walraven.com

Walraven Group

Mijdrecht (NL) · Tienen (BE) · Bayreuth (DE) · Banbury (GB) · Malmö (SE) · Grenoble (FR) · Barcelona (ES) · Kraków (PL)
Mladá Boleslav (CZ) · Moscow (RU) · Kyiv (UA) · Detroit (US) · Shanghai (CN) · Dubai (AE) · Budapest (HU)

NL



GB

