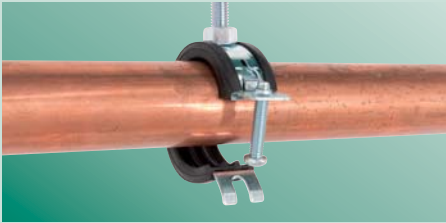
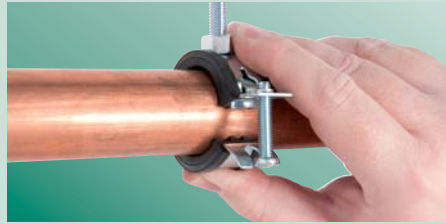


## BISMAT® 2000



*Hinge clamp around pipe*



*Press to close clamp*



*Fix screw to lock clamp*

## Fast installation thanks to a unique locking system

- Rubber lined, noise insulated
- For plastic and metal pipes
- Easy open/close locking system
- Keeps pipe in place with no tools required
- One-handed use for greater safety
- ASTM E-84 plenum rated

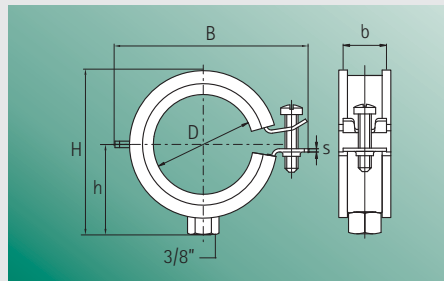
# BISMAT® 2000

BISMAT® 2000 is a unique rubber lined pipe clamp. This two-part clamp has a hinged side and the BISMAT® single screw patented locking system. The BISMAT® quick locking system is easy to close with one hand which

makes it easier and faster for installation. The noise insulating rubber lining is made of UV-resistant EPDM rubber. The BISMAT® 2000 is zinc plated for corrosion resistance.

## Features and benefits

- Rubber lined, noise insulated
- With BISMAT® quick locking system
- Clamp easy to close with one hand
- UV-resistant black EPDM rubber lining
- Material: steel, zinc plated
- ASTM E-84 plenum rated
- Meets - Buy America Act



Part No.	D (mm)	IP (")	CT (")	B (")	H (")	h (")	b x s (mm)	Fa,z (lbs)	Box
CR 341 9 014	11 - 14	1/4	3/8	1.9	1.4	0.87	20 x 1.25	180	50
CR 341 9 018	15 - 18	3/8	1/2	1.9	1.4	0.87	20 x 1.25	180	50
CR 341 9 023	20 - 23	1/2	3/4	2.2	1.6	0.94	20 x 1.25	180	50
CR 341 9 028	25 - 28	3/4	1	2.4	1.8	1.10	20 x 1.25	180	50
CR 341 9 035	31 - 35	1	1 1/4	2.6	2.0	1.20	20 x 1.25	180	50
CR 341 9 043	40 - 43	1 1/4	1 1/2	3.0	2.4	1.30	20 x 1.25	180	50
CR 341 9 053	48 - 53	1 1/2	-	3.3	2.6	1.50	20 x 1.50	180	50
CR 341 9 054	54 - 56	-	2	3.5	2.8	1.60	20 x 1.50	180	50
CR 341 9 063	57 - 63	2	-	3.7	3.1	1.70	20 x 1.50	180	50
CR 340 9 070	64 - 70	-	2 1/2	4.5	3.9	2.20	23 x 2.00	300	50
CR 340 9 080	73 - 80	2 1/2	3	5.0	4.3	2.40	23 x 2.00	300	50
CR 340 9 091	83 - 91	3	-	5.4	4.8	2.60	25 x 2.50	300	25
CR 340 9 105	100 - 105	-	4	6.0	5.3	2.90	25 x 2.50	300	25
CR 340 9 114	108 - 114	4	-	6.3	5.7	3.10	25 x 2.50	300	25

Large diameter clamps available on request. Please call for price and availability.

## BIS Heavy Duty Clamps HD1501



Part No.	D (mm)	Box
3317 3 133	125 - 133	25
3317 3 169	159 - 169	15
3317 3 204	194 - 204	15
3317 3 250	240 - 250	2
3317 3 325	315 - 325	2

## Features and benefits

- Two-part clamp with two locking bolts
- Heavy design
- Bolts secured with anti-loss washer
- CO<sub>2</sub> welded
- Material: steel, zinc plated
- Noise insulating lining, EPDM rubber, black
- Lining resistant to ageing
- Noise insulation tested according to DIN 4109
- Tested for fire safety

### United States of America Canada

**Walraven, Inc.**  
2605 East Oakley Park Road  
Suite B  
Walled Lake (Detroit), MI 48390 (US)  
Toll free +1 877 729 9259  
Phone +1 248 374 3100  
Fax +1 248 374 3232  
info@walraven-usa.com

### Walraven Group

Mijdrecht (NL) · Tienen (BE) · Bayreuth (DE)  
Grenoble (FR) · Banbury (GB) · Madrid (ES)  
Barcelona (ES) · Mladá Boleslav (CZ)  
Kraków (PL) · Kyiv (UA) · Moscow (RU)  
Detroit (US) · Shanghai (CN)

[walraven-usa.com](http://walraven-usa.com)

Your wholesaler:

