

Support system

---



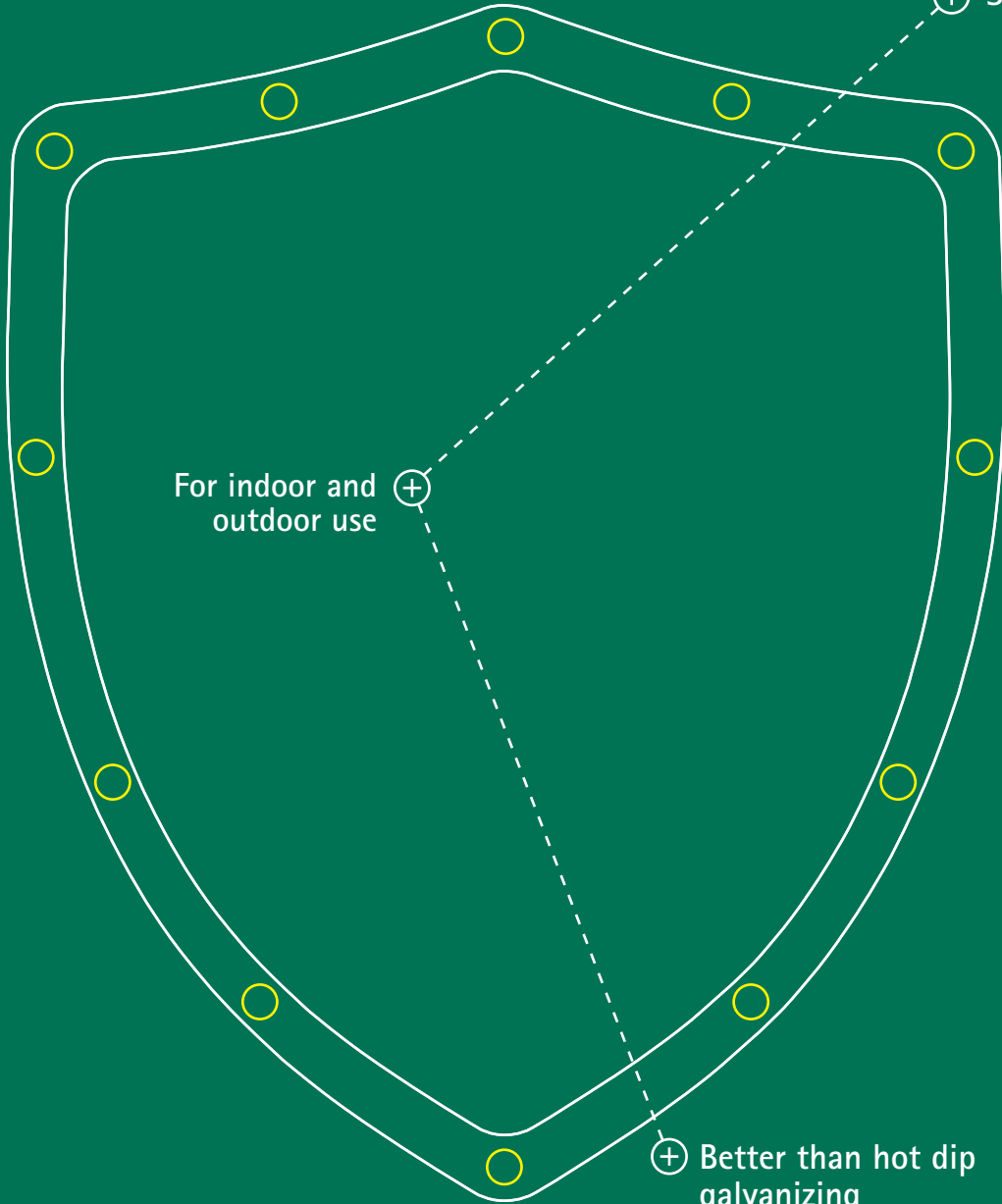
# BIS UltraProtect® 1000

For indoor and outdoor use

BIS UltraProtect® 1000



⊕ Support system



⊕ For indoor and outdoor use

⊕ Better than hot dip galvanizing



### Corrosion resistance

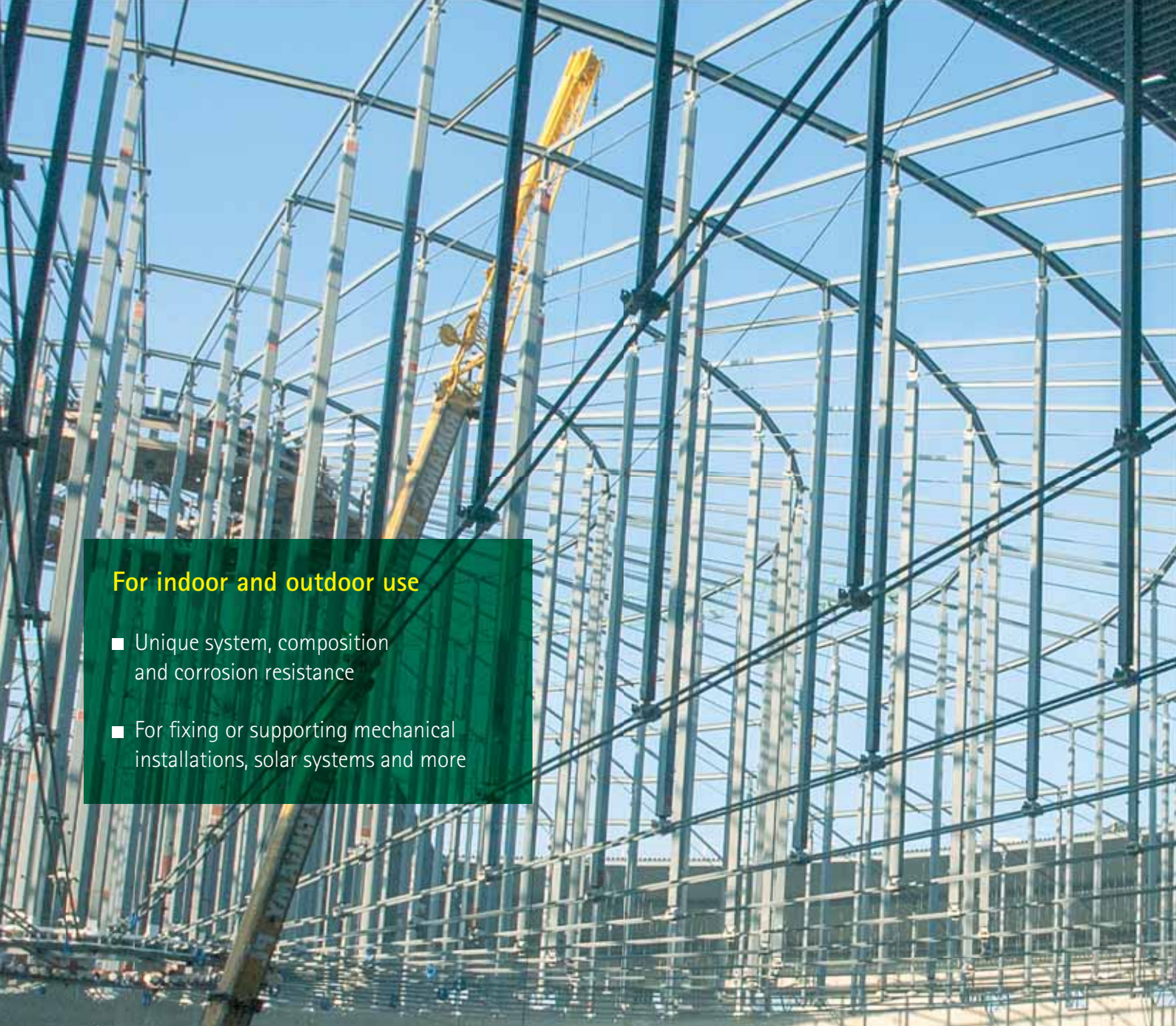
- C1 - C4 / ISO 12944-2

### Salt spray test

- 1000 hours / ISO 9227

### Complementary system

- Perfect combination with other products



### For indoor and outdoor use

- Unique system, composition and corrosion resistance
- For fixing or supporting mechanical installations, solar systems and more

#### Optimal protection

- All applied surface treatments effortlessly withstand a salt spray test of at least 1000 hours\*
- Suitable for corrosive environments (C1–C4 in accordance with ISO 12944-2)



#### Better than hot dip galvanizing

- Higher corrosion resistance: 1000 hours\* versus 300 - 600 hours (with a layer thickness of 50 - 80 µm)
- Threaded products are also well protected
- Products feel smooth and are also visually appealing



#### Complementary system

- The products in the BIS UltraProtect® 1000 system combine together perfectly
- Can also be combined with zinc plated, pre-galvanized or hot dip galvanized products\*\*

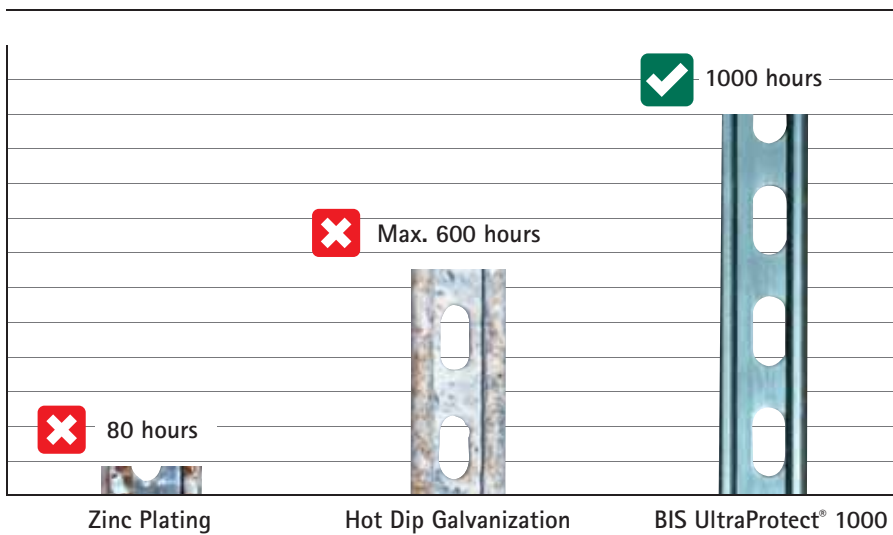


\* Until the occurrence of maximum 5% red rust.

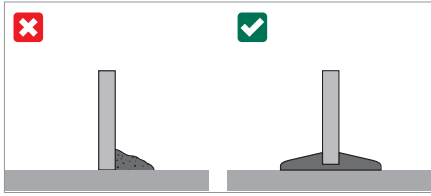
\*\* The warranty terms can be found on our website [walraven.com](http://walraven.com).



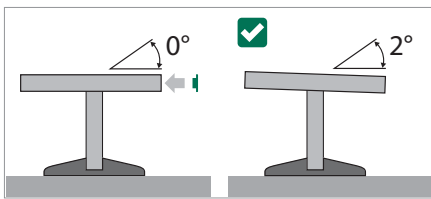
### The proof after 1000 hours salt spray test



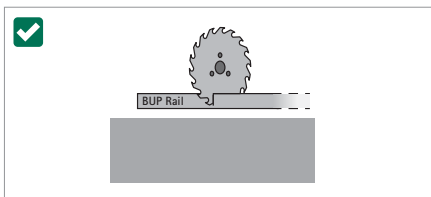
# Installation Instructions



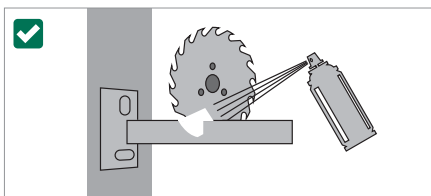
Design the system in such a way that there is no possibility of water or waste - organic or otherwise - stagnating around metal BIS UltraProtect® 1000 products. Use for example a BIS Yeti® or BIS Ursus to lift the BIS UltraProtect® 1000 System.



To make sure water runs off freely, place the BIS UltraProtect® 1000 parts at an angle of at least 2°. If leveled installations are required, make sure to fit the rail or cantilever arm with a BIS Rail End Cap (65660XX) for clean finishing of rail end and to cover all burrs. To prevent the accumulation of dirt inside the rail, use the BIS Strut PVC Profile (6566999) to close the slot (when fitted on top).

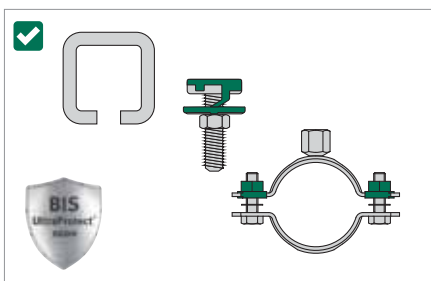


Because the BIS RapidStrut® (BUP1000) contains self repairing properties it is possible to cut the rail to length to meet your needs. The cut edges remain protected against corrosion. It may happen that some red rust is seen at the cutted edges, which will disappear by the so called "self healing effect" within a time period of several months.



If you cut a cantilever arm or any other product from our BIS Ultra Protect® range, we strongly recommend that you treat the BIS UltraProtect® 1000 Cantilever Arms with the BIS UltraProtect®1000 spray set, as this will protect the cut edges in compliance with the BIS UltraProtect® 1000 requirements.

- Step 1. 069710x Cleaner spray
- Step 2. 069720x Zinc spray
- Step 3. 069730x Rust protection 2000 plus



In order to comply with the warranty terms and conditions\* it is important that any installation only uses BIS UltraProtect® 1000 products in a system. A system with BIS UltraProtect® 1000 products in combination with other zinc treated metals like zinc plated, pre-galvanized or hot dip galvanized products is technically possible, but due to the shorter life span of non-BIS UltraProtect® 1000 products the total life span of the installation cannot be guaranteed.

To prevent galvanic corrosion BIS UltraProtect® 1000 should not be combined with any other materials including aluminium, stainless steel, copper or untreated steel.

\* The warranty terms can be found on our website [walraven.com](http://walraven.com).

# BIS UltraProtect® Range

## Yeti, Ursus, Rail System, Clamps



BIS Yeti®



BIS Ursus Foot



BIS RapidStrut® (BUP1000) DS 5 Fixing Rail



BIS RapidStrut® Cantilever Arms



BIS RapidStrut® Cross Connectors G2



BIS RapidStrut® Rail Connectors G2



BIS RapidStrut® Rail Angular Connectors G2



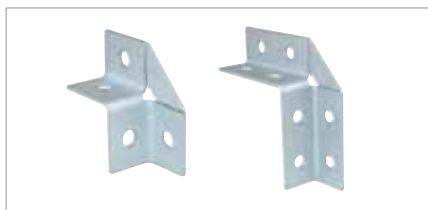
BIS RapidStrut® Rail T and X-Connector G2



BIS Threaded Rods



Fasteners



Strut 2D Connectors



BIS RapidStrut® Wall Plate



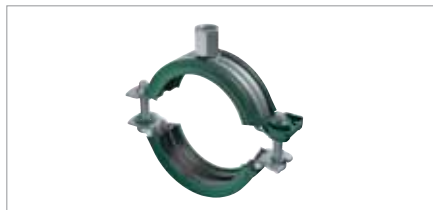
Fixpoint Consoles



BIS RapidStrut® Slide Nuts G2



BIS RapidStrut® Hammerfix G2



BIS Bifix® G2



BIS Heavy Duty Clamps HD 1501



BIS Sprinkler Clamp HD500

## Find out how we can support

Would you like to find out more about any of the solutions described in this brochure?  
Or would you like to discuss how we could support you to find the best possible solution for your project? Get in touch today!

### Singapore

South East Asia & Pacific

#### Walraven Pte. Ltd.

71 Lorong 23 Geylang #06-14

388386 Singapore (SG)

Tel. +65 6970 0605

customerservice.sg@walraven.com

### Other countries

#### Walraven International

Industrieweg 5

3641 RK Mijdrecht (NL)

Tel. +31 297 23 30 00

Fax +31 297 23 30 99

export@walraven.com

### Walraven Group

Mijdrecht (NL) · Tienen (BE) · Bayreuth (DE) · Banbury (GB) · Malmö (SE) · Grenoble (FR) · Barcelona (ES) · Kraków (PL)  
Mladá Boleslav (CZ) · Moscow (RU) · Kyiv (UA) · Danville (US) · Shanghai (CN) · Dubai (AE) · Budapest (HU) · Mumbai (IN)  
Singapore (SG) · Burlington (CA)