

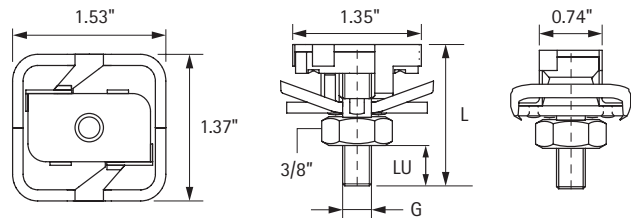
## RapidStrut® Hammerfix



### Product Specifications:

- Ready-to-use, pre-assembled for a quick installation
- Can be used with 1-5/8" x 1-5/8", 1-5/8" x 13/16" and DS5: 1-5/8" x 2" strut
- Fits in both deep and shallow strut
- Slide nut with threaded rod, washer and RapidStrut® spring
- Retains assembly in place before final tightening
- Replaces tee-nut, washer and threaded rod with one piece assembly
- No need to measure and cut rod!
- Tested for fire safety
- Conforms to Metal Framing Manufacturers Association standards
- Surface protection: Product is part of the BIS UltraProtect® 1000 system - withstands a salt spray corrosion test for a minimum of 1,000 hours (maximum 5% red rust) according to ISO 9227
- Suitable for indoor and outdoor applications
- Material: metal parts made of steel 1.0332; spring(s) made of POM (polyoxymethylene)

Item Number	G (inches)	L (inches)	LU (inches)	Fa,x (lbs.)	Items per pkg.
SR6528005	3/8	1-1/2	1/2	1,686	15
SR6528007	3/8	3	2	1,686	10
SR6528011	3/8	4	3	1,686	5
SR6528016	3/8	6	5	1,686	5



PRODUCT SUBMITTAL		Architect / Owner:
Job Name:		
		Contractor:
Date:		
Part No.	Qty:	Notes:

THE INFORMATION CONTAINED IN THIS SUBMITTAL SHEET IS PROPRIETARY TO WALRAVEN, INC. AND IS SUBJECT TO CHANGE WITHOUT NOTICE. THIS INFORMATION MAY NOT BE REPRODUCED IN PART OR WHOLE WITHOUT WRITTEN AUTHORIZATION FROM WALRAVEN, INC.

