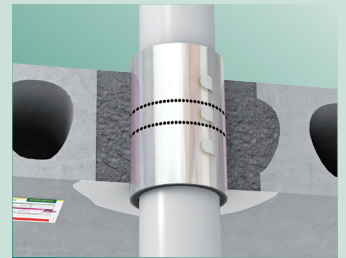
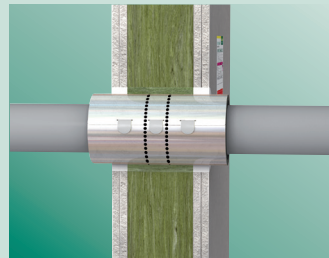
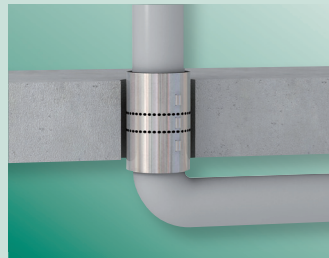
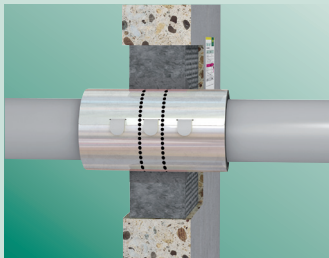
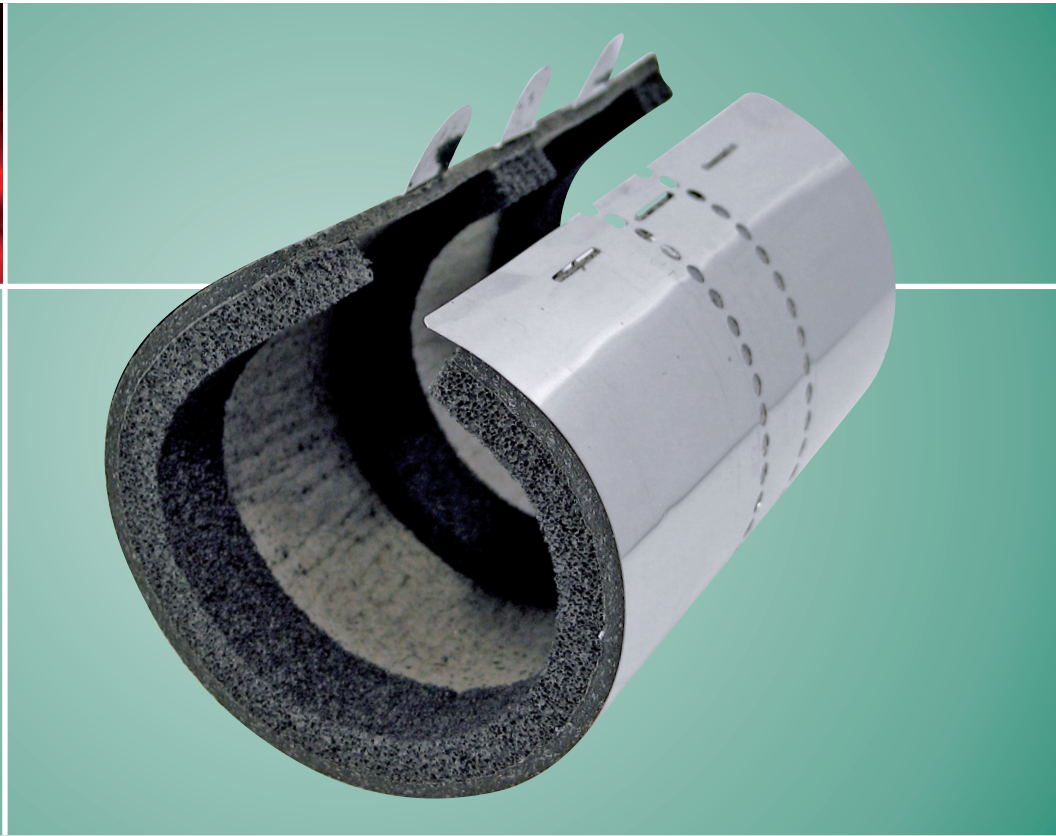


BIS Pacifyre® MK II Fire Sleeve





BIS Pacifyre® MK II

Easy self-installation in accordance with the standards

"Simple and innovative"

Dutch Building Prize Jury

Broad safety applications

The BIS Pacifyre® MK II Fire Sleeve is a single component fire sleeve with which you can make an aperture for pipes smoke free and fire resistant. In homes, factories, hospitals, offices and other commercial buildings the BIS Pacifyre® MK II is installed around pipes through floors, ceilings, solid walls and modular walls.

BIS Pacifyre® MK II Fire Sleeves ensure fire compartments that effortlessly comply with the building regulations.

When to use?

In accordance with the building regulations for fire protection every building must be divided into fire compartments. Unprotected apertures for mechanical installations, compromise the fire resistance of the walls, floors and ceilings of such a fire compartment. Therefore, the Walraven BIS Pacifyre® MK II properly seals these apertures to code.





Strong in fire resistance

It shows in all fire tests that the BIS Pacifyre® MK II Fire Sleeve complies amply with all the standards. You can ensure a very simple and trustworthy fire resistant

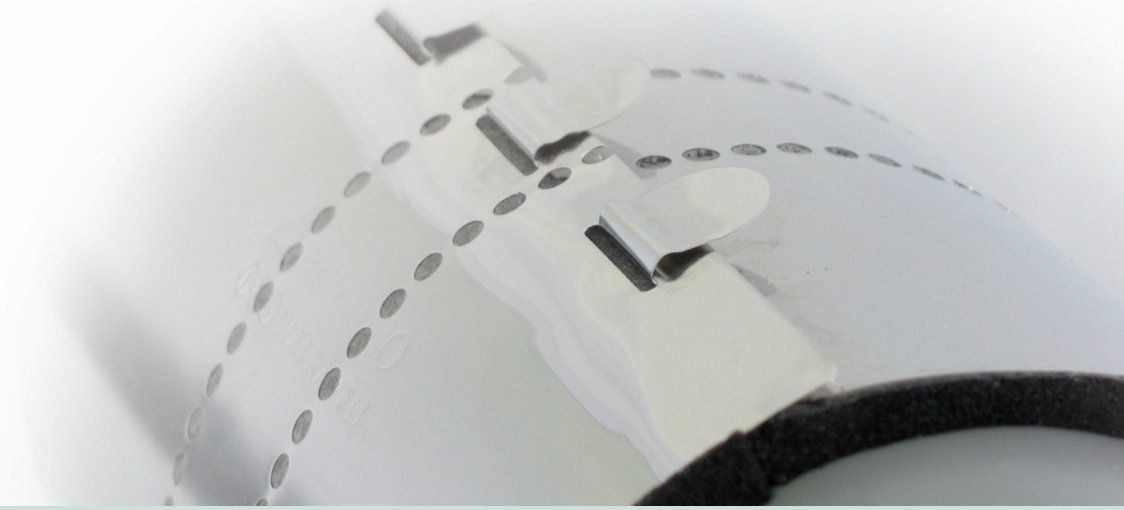
aperture without the need for any training. The cost and time savings are crystal clear. In short: the BIS Pacifyre® MK II Fire Sleeve is an innovative, effective and reliable product.

The BIS Pacifyre® MK II Fire Sleeve has been extensively tested by independent authorities in the USA (according to ASTM E-814). A summary of the results:

Aperture	Installation	Certification and approvals
Gypsum Wall	Plastic Pipe - Closed Systems	  Intertek Certified to: ASTM E-814
Concrete Wall	Plastic Pipe - Closed Systems	
Concrete Floor	Plastic Pipe - Closed Systems	

Operational benefits

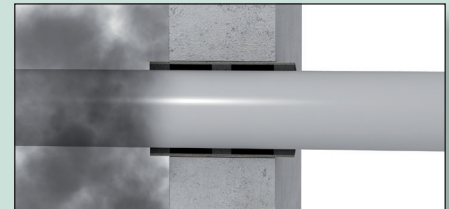
- Prevents the spreading of fire
- Prevents the spreading of smoke
- Prevents the conduction of noise
- Remains operational for decades without maintenance
- Expansion and contraction of the pipe remains possible
- Contains no dangerous materials
- Emits no toxic gases or smoke in the event of a fire



Smoke seal

When a fire burns, it generates carbon dioxide, water vapor, carbon monoxide, particulate matter, chemicals and hazardous gases. Most victims of fires (ca. 95%) die from smoke or toxic gases, not from burns. Thanks to its 3

foam strips the BIS Pacifyre® MK II Fire Sleeve is a perfect seal. Also at lower temperatures it allows smoke no chance of penetrating other areas in any situation!

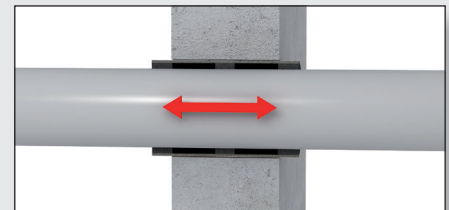


Perfect smoke seal

Free pipe expansion and noise barrier

In normal day-to-day operation pipes shrink and swell because of temperature or pressure fluctuations of fluids running through the pipe. When such a pipe is in direct contact with the building, it produces noise.

Thanks to the 3 foam strips in the BIS Pacifyre® MK II Fire Sleeve the pipe can expand and contract freely. Noise transmission from one room to another and contact noises are being absorbed and reduced.



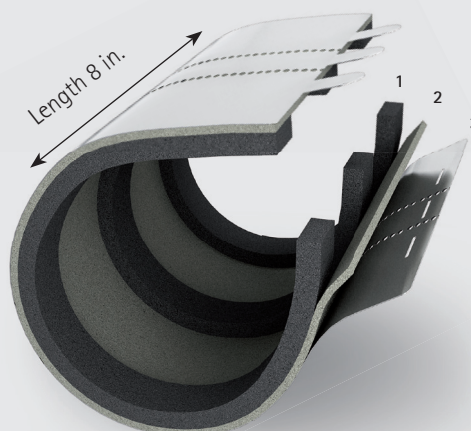
Free expansion and contraction

BIS Pacifyre® MK II Fire Sleeve is one of the few fire stops that, as well as being fire resistant, also offers good smoke sealing and noise proofing!

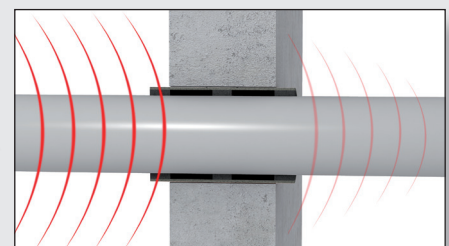
Composition

The BIS Pacifyre® MK II Fire Sleeve comprises of:

1. Three foam strips (smoke seal and noise barrier)
2. A layer of intumescent (seal in the event of a fire)
3. A sleeve of stainless steel for counter pressure and protection



Reduction of contact noise



Reduction of noise transmission

Ease of installation above all



1. Wrap the sleeve around the pipe



2. Tabs in proper position



3. Bend and lock the tabs



4. Slide the sleeve into the aperture and center it



5. Fill the opening with Fire resistant acrylic or mortar



6. Fix Universal Card

Certification and approvals



Intertek

Intertek

Certified to:
ASTM E-814

W/N #20829



Through Penetration Firestopping

CSFM Listed

#4485-2118:0100

Selection table for plastic pipes (Closed Systems Only)

The BIS Pacifyre® MK II Fire Sleeve is available in all common pipe sizes for plastic pipes.

Part No.	Metric PP-R OD (mm)	PEX/CPVC CTS (Nom)	PVC/CPVC IPS (Nom)
215 1 015017		1/2"	
215 1 018020		5/8"	
215 4 021023		3/4"	1/2"
215 4 024026	25		
215 4 027029		1"	3/4"
215 4 030032	32		
215 4 033035		1-1/4"	1"
215 4 039041	40		
215 4 042044		1-1/2"	1-1/4"
215 4 048050	50		1-1/2"
215 4 054056		2"	
215 4 063065	63		2"
215 4 066068		2-1/2"	
215 4 072074			2-1/2"
215 4 075077	75		
215 4 078080		3"	
215 4 087089			3"
215 4 090092	90		
215 4 108110	110		
215 4 114116			4"
215 8 123125	125		
215 8 141143			5"
215 8 159161	160		
215 8 168170			6"

United States of America
Canada

Walraven, Inc.

2605 East Oakley Park Road
Suite B
Walled Lake (Detroit), MI 48390 (US)
Toll free +1 877 729 9259
Phone +1 248 374 3100
Fax +1 248 374 3232
info@walraven-usa.com

Walraven Group

Mijdrecht (NL) · Tienen (BE) · Bayreuth (DE)
Grenoble (FR) · Banbury (GB) · Madrid (ES)
Barcelona (ES) · Mladá Boleslav (CZ)
Kraków (PL) · Kyiv (UA) · Moscow (RU)
Detroit (US) · Shanghai (CN)

walraven-usa.com

Your wholesaler: