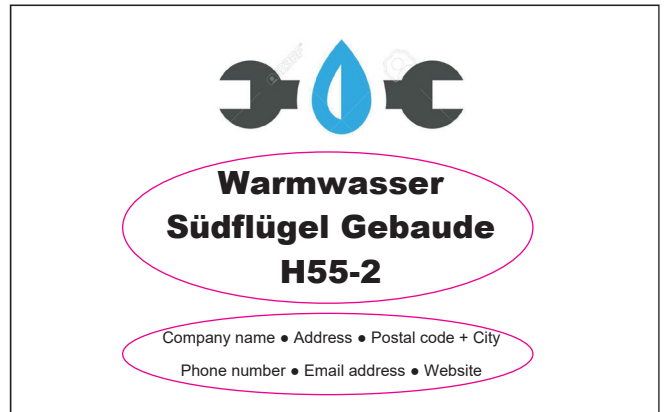


ISK Card Assembly Instruction

How to create your own card.

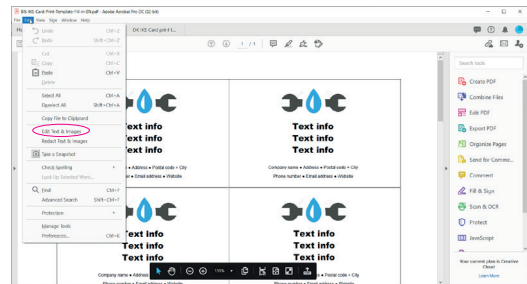
1. Open the ISK Template pdf
Fill in your business name and contact information



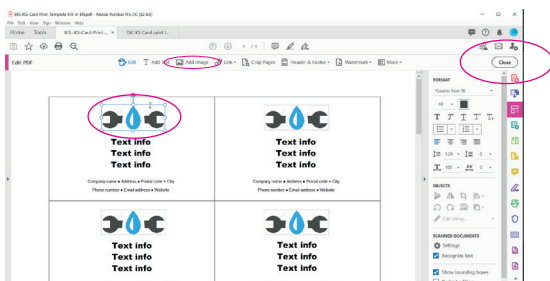
How to change your logo



1. Menu bar - Edit text & images



3. Add image



Import your own image of your logo into the PDF.
This can be a jpg file. Enlarge or reduce your logo and place the logo above the text.

After that click on close.
Done!