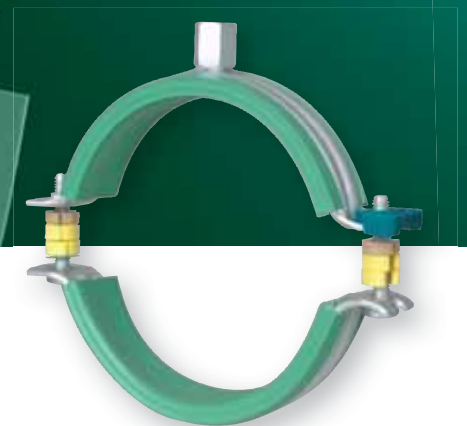


Designed for plastic pipes



## BIS Bifix<sup>®</sup> 5000 G2

The next generation



BIS Bifix® 5000 G2



The next generation



Comfortable and secure to install



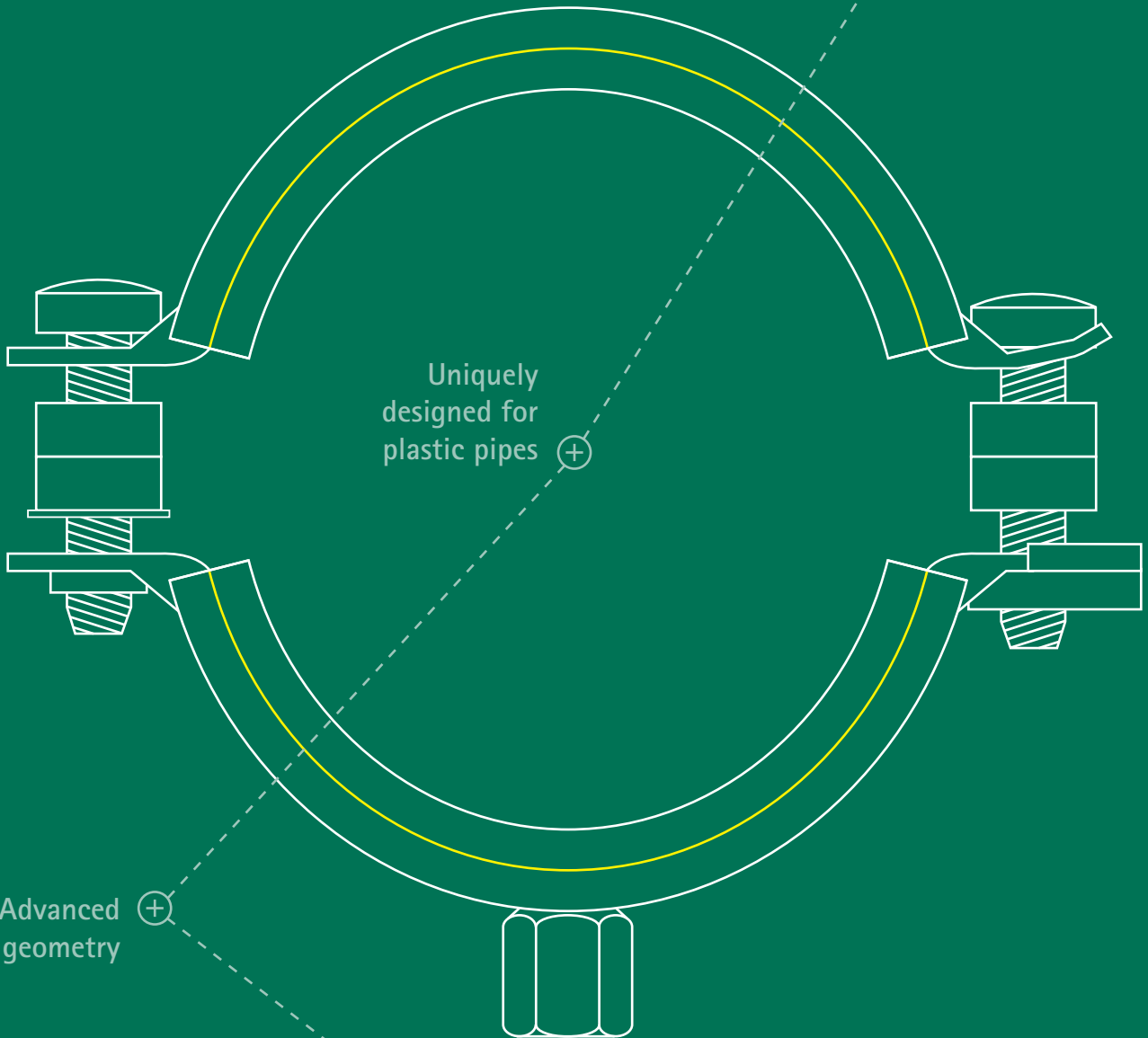
Uniquely designed for plastic pipes



Advanced geometry



Optimal protected with BIS UltraProtect® 1000



# BIS Bifix<sup>®</sup> 5000 G2

The next generation

## BIS Bifix<sup>®</sup> 5000 G2 Clamp

- For indoor & outdoor use
- Increased strength
- For sliding & tight fixing
- For plastic pipes Ø 16 - 200 mm
- Noise insulation

# BIS Bifix<sup>®</sup> 5000 G2

Uniquely designed for plastic pipes





## For sliding & tight fixing

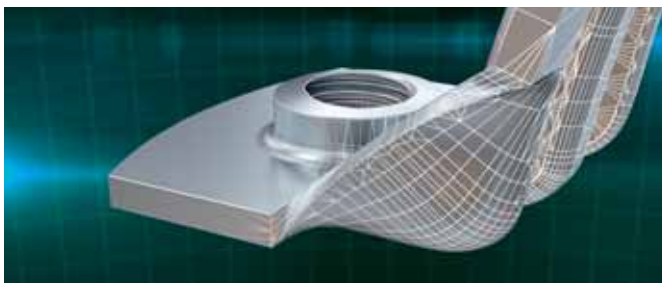


■ With spacer washers for sliding application



■ Without spacer washers for fixed application

## Increased strength



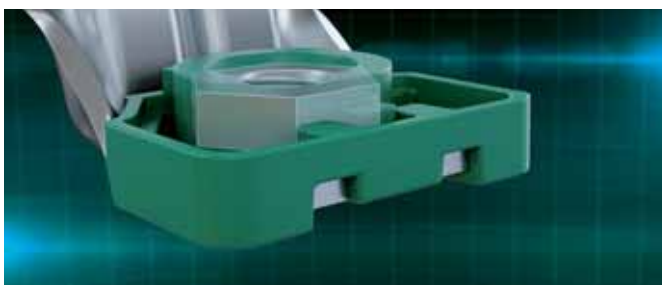
■ Advanced geometry; folded edges at clamp's lip

## For indoor & outdoor use

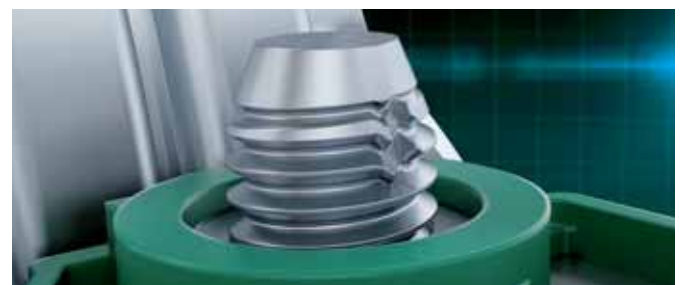


■ Extreme corrosion resistance, unique in HVAC

## Comfortable & secure to install



■ Hammer with captive nut



■ Anti-loss screw



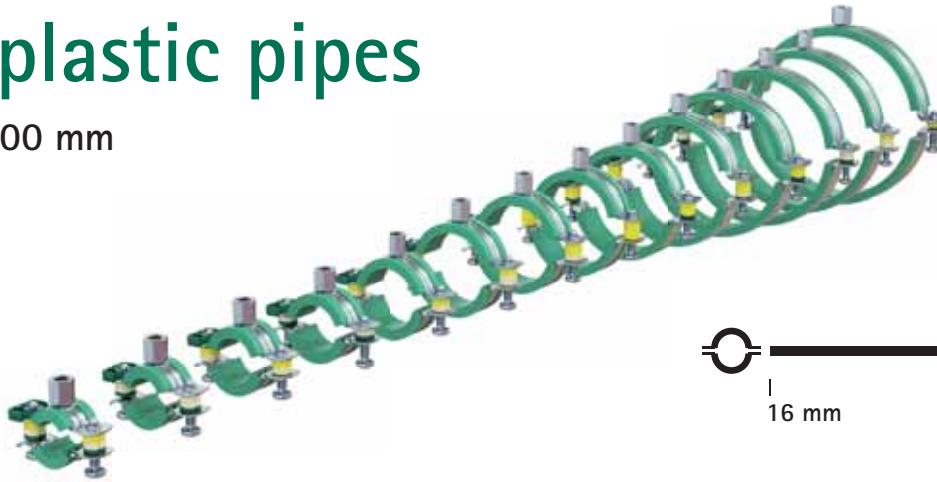
■ Innovative locking; interlocking for more security



■ Noise reducing thick rubber lining

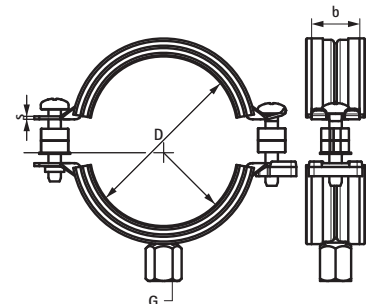
# For plastic pipes

Ø 16 - 200 mm



## Technical data

Pipe Ø D (mm)	b x s (mm)	Connection nut (G)	
		M8/M10	
16	20 x 1,25	318 8 016	
20	20 x 1,25	318 8 020	
25	20 x 1,25	318 8 025	
32	20 x 1,25	318 8 032	
40	20 x 1,25	318 8 040	
50	20 x 1,25	318 8 050	
56	20 x 1,25	318 8 056	
58	20 x 1,25	318 8 058	
63	20 x 1,25	318 8 063	
75	20 x 1,25	318 8 075	
78	20 x 1,50	318 8 078	
90	23 x 2,00	318 8 090	
110	23 x 2,00	318 8 110	
125	23 x 2,00	318 8 125	
135	23 x 2,00	318 8 135	
160	25 x 2,50	318 8 160	
200	25 x 2,50	318 8 200	



## Features and benefits

- Two-screw clamp
- With quick locking system
- With removable spacer washers, making the clamp suitable for either sliding or anchoring
- Surface protection: product is part of the BIS UltraProtect® 1000 System
- Noise insulating lining according to DIN 4109
- Age resistant green EPDM lining, specific for application with plastic pipes
- Inner part of lining is smooth to improve sliding of pipe in clamp





# BIS UltraProtect® 1000

## Corrosion resistance

- C1 - C4 / ISO 12944-2

## Salt spray test

- 1000 hour / ISO 9227

## Complementary system

- Perfect combination with other products

## Find out how we can support you

Would you like to find out more about any of the solutions described in this brochure?

Or would you like to discuss how we could help you find the best possible solution for your project? Get in touch today!

### Other countries

#### Walraven International

P.O. Box 15

3640 AA Mijdrecht (NL)

Tel. +31 (0)297 23 30 00

Fax +31 (0)297 23 30 99

export@walraven.com

#### Walraven Group

Mijdrecht (NL) · Tienen (BE) · Bayreuth (DE) · Banbury (GB) · Malmö (SE) · Grenoble (FR) · Barcelona (ES) · Kraków (PL)  
Mladá Boleslav (CZ) · Moscow (RU) · Kyiv (UA) · Detroit (US) · Shanghai (CN) · Dubai (AE) · Budapest (HU)

