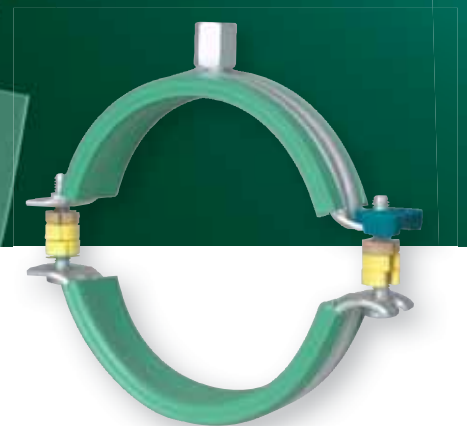


Designed for plastic pipes



## BIS Bifix<sup>®</sup> 5000 G2

The next generation



BIS Bifix® 5000 G2



The next generation



Comfortable  
and secure  
to install



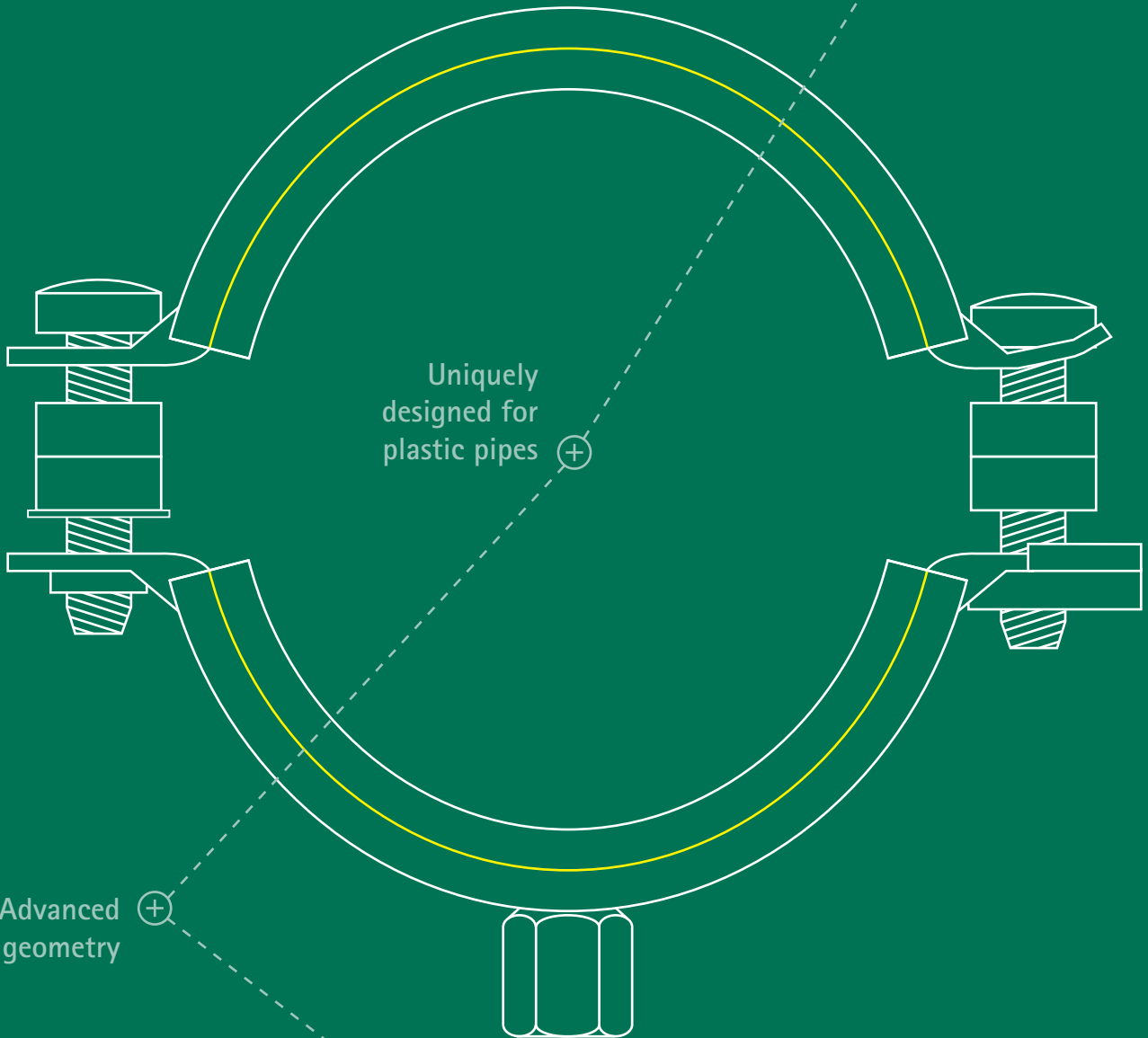
Uniquely  
designed for  
plastic pipes



Advanced  
geometry



Advanced surface protection  
with BIS UltraProtect® 1000



# BIS Bifix<sup>®</sup> 5000 G2

The next generation

## BIS Bifix<sup>®</sup> 5000 G2 Clamp

- For indoor & outdoor use
- Increased strength
- For sliding & tight fixing
- For plastic pipes Ø 16 - 200 mm
- Noise insulation

# BIS Bifix<sup>®</sup> 5000 G2

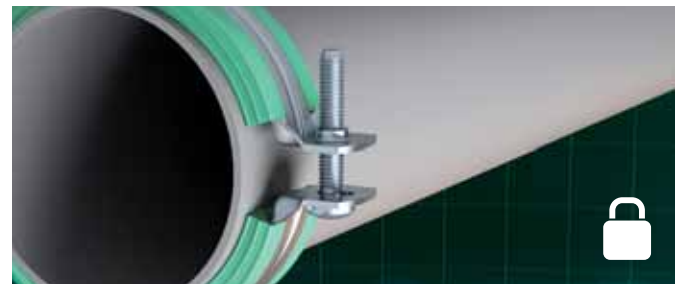
Uniquely designed for plastic pipes



## For sliding & tight fixing

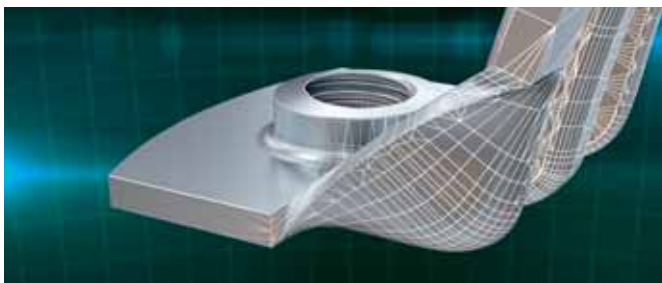


■ With spacer washers for sliding application



■ Without spacer washers for fixed application

## Increased strength



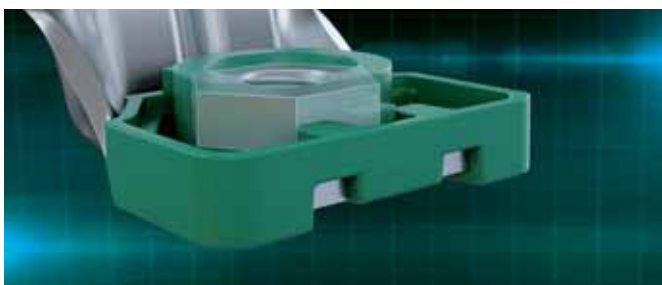
■ Advanced geometry; folded edges at clamp's lip

## For indoor & outdoor use

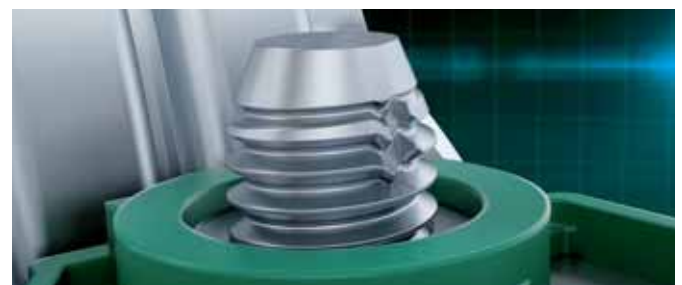


■ Extreme corrosion resistance, unique in HVAC

## Comfortable & secure to install



■ Quick-fixing hinge with captive nut



■ Anti-loss screw



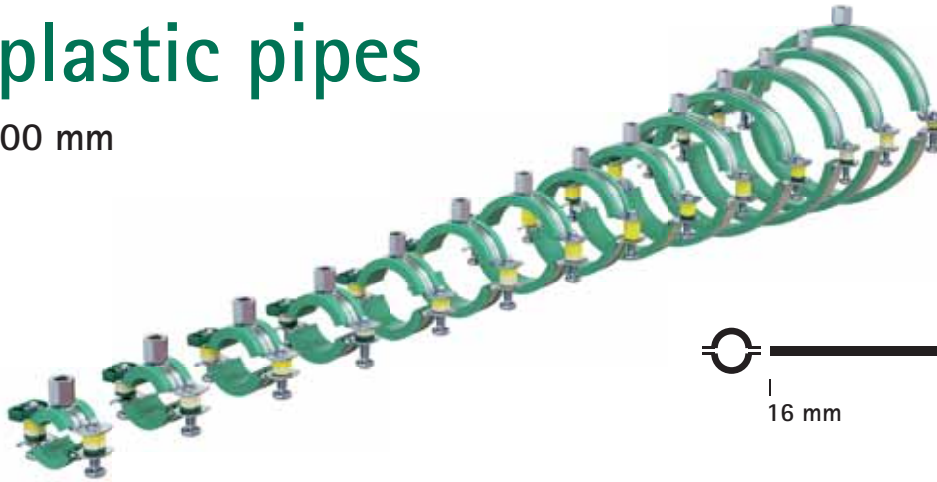
■ Innovative locking; interlocking for more security



■ Noise reducing thick rubber lining

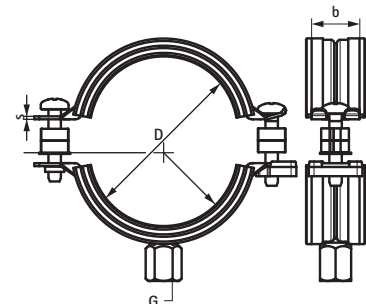
# For plastic pipes

Ø 16 - 200 mm



## Technical data

Pipe Ø D (mm)	b x s (mm)	Connection nut (G)	
		M8/M10	
16	20 x 1,25	318 8 016	
20	20 x 1,25	318 8 020	
25	20 x 1,25	318 8 025	
32	20 x 1,25	318 8 032	
40	20 x 1,25	318 8 040	
50	20 x 1,25	318 8 050	
56	20 x 1,25	318 8 056	
58	20 x 1,25	318 8 058	
63	20 x 1,25	318 8 063	
75	20 x 1,25	318 8 075	
78	20 x 1,50	318 8 078	
90	23 x 2,00	318 8 090	
110	23 x 2,00	318 8 110	
125	23 x 2,00	318 8 125	
135	23 x 2,00	318 8 135	
160	25 x 2,50	318 8 160	
200	25 x 2,50	318 8 200	



## Features and benefits

- Two-screw clamp
- With quick locking system
- With removable spacer washers, making the clamp suitable for either sliding or anchoring
- Surface protection: product is part of the BIS UltraProtect® 1000 System
- Noise insulating lining according to DIN 4109
- Age resistant green EPDM lining, specific for application with plastic pipes
- Inner part of lining is smooth to improve sliding of pipe in clamp



# BIS UltraProtect® 1000

## Corrosion resistance

- C1 - C4 / ISO 12944-2

## Salt spray test

- 1000 hour / ISO 9227

## Complementary system

- Perfect combination with other products

## Find out how we can support you

Would you like to find out more about any of the solutions described in this brochure? Or would you like to discuss how we could help you find the best possible solution for your project? Get in touch today!

### United Kingdom Ireland

---

#### Walraven Ltd.

Thorpe Way, Banbury (GB)  
Oxon, OX16 4UU  
Tel. +44 (0)1295 75 34 00  
Fax +44 (0)1295 75 34 28  
sales.uk@walraven.com

### Walraven Group

---

Mijdrecht (NL) · Tienen (BE) · Bayreuth (DE) · Banbury (GB) · Malmö (SE) · Grenoble (FR) · Barcelona (ES) · Kraków (PL)  
Mladá Boleslav (CZ) · Moscow (RU) · Kyiv (UA) · Detroit (US) · Shanghai (CN) · Dubai (AE) · Budapest (HU)

