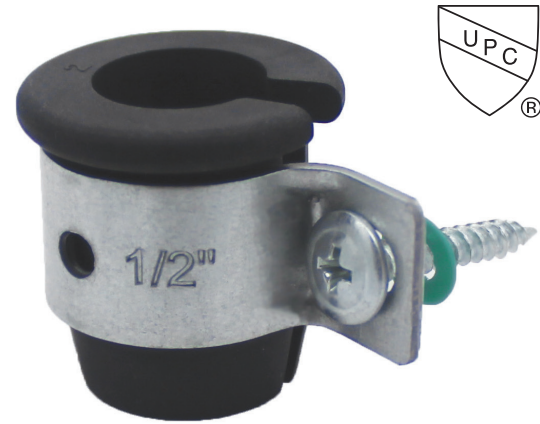


AWB Copper Stub-out

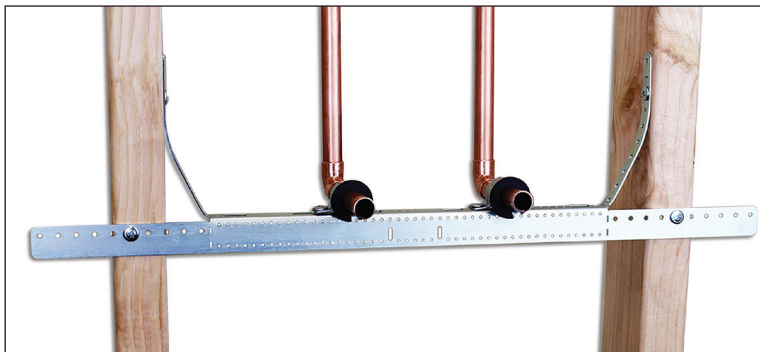
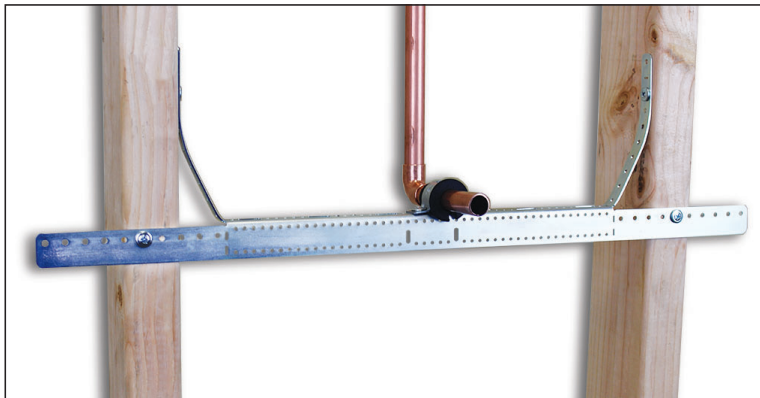
A quick assembly of clamp and insert for use on LAWB and HAWB brackets



Product Specifications:

- Assembly is placed inot pre-punched holes on AWB or in-wall strut and secured using retaining screw
- No loose hardware
- Adjustable every 2" +or- 1/2"
- Insert included to create a secure stub-out connection

| Item Number | Item Description | Size (inches) | Items per pkg. |
|-------------|---|---------------|----------------|
| 59498212 | AWB stub-out clamp with retaining screw and insert - for use with copper pipe | 1/2 | 25 |
| 59498216 | AWB stub-out clamp with retaining screw and insert - for use with copper pipe | 3/4 | 25 |



AWB Copper Stub-out clamp(s) with insert shown installed on a Heavy Angled Wall Bracket (HAWB). Can be used as a single or double stub-out.

| PRODUCT SUBMITTAL | |
|--------------------|------|
| Job Name: | |
| Date: | |
| Part No. | Qty: |
| | |
| | |
| | |
| | |
| | |
| Architect / Owner: | |
| Contractor: | |
| Notes: | |
| | |
| | |
| | |
| | |
| | |
| | |

THE INFORMATION CONTAINED IN THIS SUBMITTAL SHEET IS PROPRIETARY TO WALRAVEN, INC. AND IS SUBJECT TO CHANGE WITHOUT NOTICE. THIS INFORMATION MAY NOT BE REPRODUCED IN PART OR WHOLE WITHOUT WRITTEN AUTHORIZATION FROM WALRAVEN, INC. **walraven**